



RUTGERS
New Jersey Agricultural
Experiment Station

2015

Sussex County 4-H Exhibit Catalogue

75th

Anniversary of the Fair



New Jersey State Fair[®] /
Sussex County Farm
and Horse Show

Sponsors

Sussex County 4-H would like to acknowledge the following sponsors for their support of 4-H Shows at the 2015 New Jersey State Fair/Sussex County Farm and Horse Show

Sussex Bank

4-H Sheep, Beef, and Swine Shows

Chocolate Goat

4-H Dairy and Meat Goat Shows

Eleanor J. Benz, Attorney at Law

4-H Dog Club Demonstrations and Dog Show

Sussex County 4-H Teen Council

Donations towards 4-H Ribbons and Awards

Sussex County 4-H Advisory Council

Donations towards 4-H Ribbons and Premiums

May 2015

Sussex County 4-H Community:

Provided here is the 2015 4-H Exhibit Catalog for entering the upcoming New Jersey State Fair®/Sussex County Farm & Horse Show, July 31st-August 9th.

Due to cost control measures and environmental consideration we will not be printing full copies. If you do not have Web/Internet access and require a full copy of the *2015 4-H Fair Exhibit Catalog*, please contact the Sussex 4-H Office or the Fair Office to request a hard copy.

Sussex 4-H leaders, parents and members please review the *4-H Exhibitor Behavior Code*. You are expected to adhere to this behavior code at all times. Failure to do so may result in expulsion from the fairgrounds and forfeit of all ribbons, premiums and prizes.

- ☘ *No entry form will be accepted without both the 4-H member's and the parent/guardian's signature.*
- ☘ *All exhibits inside the Shotwell Building must be completed by 9 p.m. on the Wednesday before the fair officially opens. The fair opens officially at 10 am on Friday and people will begin to visit the indoor exhibits. All exhibit items must remain on display until 5:00 pm on the last Sunday of the fair.*

4-H leaders should devote a 4-H club meeting to work with their members on entering items in the fair. New members will not know how to do this unless you share this information. At minimum, they should read over the Entry Rules, and the rules for any departments their club's members may plan to exhibit.

Your cooperation and assistance in helping 4-H'ers complete the 4-H Member entry forms properly will be greatly appreciated.

Every 4-H member must submit an individual entry form indicating their participation in the fair to be eligible for fair passes.

Please return or mail your members' 4-H Member entry forms to:

The 4-H/RCE Office at 130 Morris Turnpike, Newton, NJ 07860 by July 1st.
(*The 4-H office is located in Frankford Township across from the Office of Emergency Planning on CR 655.*)

If July 1st falls on a Saturday or Sunday, the 4-H Member entry forms are due in the 4-H Office the Friday before*.
No exceptions will be made for entries that are received after this date.

If forms are incomplete they will *not* be processed. All forms must be processed by the 4-H Office before they are sent to the Ag. Division Office at the fairgrounds (Tammy Hayes).

Any forms processed after July 1st will be marked as late and the participant will be ineligible for passes or premiums.

Please plan to submit all 4-H member entry forms and other materials for your project area by the July 1st deadline.

4-H Member entry forms are available at the 4-H Office and online at www.sussex4h.org. Please pick them up for your members.

Thank you,



David Foord
4-H Senior Program Coordinator



Tanya Patrie
4-H Program Assistant

Directory

General Rules	Page
4-H Exhibitor Behavior Agreement	2
4-H Exhibit Catalog Entry Rules	3-4
When Shotwell Building exhibits have to be on the fairgrounds	4
Rules for Use of the Shotwell Building	4

Exhibits in the Phoebe and Ralph Shotwell Building

Department	Chairperson	
1 Vegetables	Deb Brodhecker	5
2 Herbs	Deb Brodhecker	7
3 Plants & Flowers	Deb Brodhecker	7
4 Forestry & Conservation	Kate Foord	11
5 Woodcraft Engineering	Vacant	13
6 Cloverbud Club Display	Lisa Connelly	14
8 Foods & Nutrition	Phoebe Shotwell	15
9 Foods Preservation	Phoebe Shotwell	17
10 Clothing Construction/ Fashion Show	Florence Constantine	18
11 Canine Studies	Jonathan Clemmons	20
12 Child Care	Vacant	21
13 Needlecraft	Lisa Connelly	22
14 Home Furnishings	Vacant	25
15 Arts & Crafts	Lisa Connelly	26
16 Art	Lisa Connelly	28
17 Ceramics	Lisa Connelly	29
18 Photography	4-H Staff	30
19 Hobbies & Collections	Vacant	32
20 Construction	Vacant	34
21 Shooting Sports	4-H Staff	35
23 Club Booth Display	4-H Staff Members	37

Exhibits in the Livestock Area

24 Model Horse	Nancy Espinosa	38
27 Feline Studies	Roberta Brandau	40

When livestock animals have to be on the fairgrounds 41

Updated Revisions to Animal Health Requirements (2012) 42

28 Rabbits & Cavy	Donna Meisinger	43
29 Poultry	Mike and Tanya Sullivan	46

Market animals - lamb, steer, goat and hog 48

30 Beef Management	JD Zitone	50
31 Dairy Cattle	Marissa Cramer, Teri Kuperus	53
32 Sheep and Market Lamb	Irene Zeberl, Rachel Zeberl	56
33 Dairy Goat	Alice Sensale	61
34 Horsemanship	Lori Wunderlich	64
35 Swine	Allison Simeone	66
36 Meat Goat	Alice Sensale	69
38 Alpaca	Natalie Burger	73

4-H Exhibitor Behavior Code Agreement

According to policy set forth by the Sussex County 4-H Program Advisory Council in concurrence with Rutgers Cooperative Extension and the Department of 4-H Youth Development and further endorsed by the Executive Committee of the NJ State Fair®/Sussex County Farm & Horse Show, the following statement and 4-H Exhibitor Behavior Code shall apply to all 4-H members, their parents, legal guardians, and volunteer 4-H leaders.

The Sussex County 4-H Youth Development Program will adhere to the 4-H Exhibitor Behavior Code as outlined below and additionally endorses all behavior policies as noted in the official International Association of Fairs and Expositions (IAFE) code of behavior for exhibitors. The IAFE code will be prominently posted throughout the exhibit areas used by Sussex County 4-H (Shotwell Building, Livestock Show Arena and animal barns). ***No 4-H fair project entry form will be accepted unless both the 4-H member and parent/guardian sign this agreement.***

Note: Violations of any aspect of the 4-H or IAFE Code Of Conduct will be immediately reported to the NJSF®/SCFHS, Agricultural Superintendent. Immediate corrective action will be taken with further disciplinary action to follow upon detailed investigation of the infraction or incident.

4-H Exhibitor Behavior Code

- ☼ The health, safety, and welfare of others must be respected at all times.
- ☼ Appropriate language and behavior are expected at all times. Profanity, foul or abusive language, inflammatory statements, derogatory comments or physical altercations toward any group or individual are not permitted.
- ☼ Participants are expected to participate in all scheduled club activities at the NJSF®/SCF&HS.
- ☼ 4-H members are required to wear exhibitor name tags/numbers for proper identification while on the grounds or participating in a 4-H event.
- ☼ Participants are responsible for following the instructions of all 4-H staff and event 4-H volunteer leaders.
- ☼ All behavior or language of a sexual nature at 4-H events is inappropriate and unacceptable. Dignified and respectable behavior is expected at all times from youth and adults.
- ☼ Curfew hours must be strictly followed.
- ☼ Behavior during free time is subject to the supervision of 4-H staff and 4-H leaders.
- ☼ Previously set Dress Code standards for the event must be met by all participants (i.e., no sexually suggestive, culturally insensitive, tobacco or alcohol industry sponsored shirts, inappropriately cut shirts, shorts, pants or skirts, etc.)
- ☼ Possession, distribution or use of alcoholic beverages or illegal drugs is prohibited. Prescription drugs and over-the-counter medications may be dispensed by adult chaperones only with written authorization provided by the parent/guardian on the 4-H Event Permission Form filed for the event.
- ☼ For the well being of self and others, smoking and the use of other tobacco products is prohibited in all animal barns.
- ☼ Care and respect for property, personal and institutional, is expected at all times. Theft or possession of missing property is prohibited.
- ☼ Unauthorized possession, distribution or use of weapons, ammunition or fireworks is prohibited.
- ☼ Honesty is expected at all times from 4-H members. Dishonesty, cheating, plagiarism and forgery are inappropriate actions.

You will be required to sign 4-H registration forms for NJSF®/SCFHS indicating that you have read the 4-H Exhibitor Behavior Code outlined above and discussed it with your son/daughter and understand and agree to the conditions set forth.

4-H Exhibit Catalog Entry Rules

1. The 4-H Exhibit Committee will not be liable, in any way, for loss due to fire, water, theft, an act of God/Nature, or any cause whatsoever, and the exhibitors shall hold the Fair Committee blameless for any loss and upon this condition only are the entries accepted. However every precaution will be taken to protect the exhibits.
2. ALL exhibits, including Club Booths and Cloverbud Booths, must remain on view until 5:00 p.m. on the last Sunday. All exhibits must be removed between 5:00 and 6:00 p.m. Exceptions are the Livestock Exhibits; check with department chairperson to find out the time of departure for your department. Exhibitors are responsible for removal of the exhibits and for the pick up of their premiums. Any exhibitor removing an exhibit or any part of an exhibit without permission from the department chairperson before 5:00 pm on Sunday will forfeit all ribbons and premiums.
3. Only officially enrolled and active 4-H club members in Sussex County are eligible to exhibit. The only exception to this is with items entered by students in the special *4-H School Projects Exhibit Departments*, or *Camp Craft* (part of Department 15).
4. A 4-H member must be enrolled in a 4-H club by January 1st of the current year to be eligible to exhibit. All exhibits must be the result of the current 4-H year's project work.
5. Each exhibit item must be listed on a **4-H Member Entry Form**. If 4-H Member entry forms are not filled out completely with name of exhibitor, complete mailing address, grade level completed in school, and phone number, it will be assumed that the exhibitor is a Cloverbud member and no premiums will be paid. The local 4-H club leader as indicated by his/her signature must then approve this entry form. **All 4-H member entry forms must be returned to the 4-H office 130 Morris Turnpike, Newton, NJ 07860 by July 1st** (*no matter what day July 1st falls on*). If the 1st falls on a Saturday or a Sunday, then the form is due the Friday before. Any entry received after this date will forfeit all cash awards.)
6. 4-H Member entry forms must be filled out completely and neatly using **Department Numbers, Section Numbers, Class Numbers, Name of Article, Name of Exhibitor, & Grade Level Completed in School by Exhibitor During Current Year**. Pre-printed exhibit tags will be available when items are received at the fairgrounds.
7. Most departments indicate that only **one** entry per class is allowed. Some departments indicate otherwise. Be sure to **read** the department **rules** for each department in which you intend to exhibit items. **Entries** not meeting department and class requirements will be disqualified by department chairperson, thus forfeiting all ribbon and cash prizes.
8. All Shotwell Building exhibit items shall be prejudged before the fair, except as noted in *When Shotwell Building Exhibits Have To Be On The Fairgrounds*.
9. Project Record Books for all Departments **must** be submitted to the local 4-H club leader for evaluation and review along with the 4-H Member Entry Form. A separate record book is required for each club in which a 4-H member is registered. If any club's work involves more than one project area, (for example: Nature and Photography), a single record book can be completed for that particular club. Leaders for each project area must initial next to the project(s) on the entry form after review of the appropriate record book(s) has been completed. All 4-H leaders are asked to cooperate by collecting the 4-H member entry form(s) and any record book(s) for each member. Then the 4-H leader or an adult designated by the club leader must submit all the 4-H member entry forms **and record books from their entire club** to the 4-H Office located at 130 Morris Turnpike, Newton, NJ, 07860, off of CR 655 across from the Office of Emergency Management by July 1st.

4-H Exhibit Catalog Entry Rules—*continued*

10. Final Project Record Evaluation: all project record books, are to be given final examination by 4-H club leaders during the month of September. Only project achievements deserving of county medal recognition, as determined by the club leader, should be sent to the 4-H Office. Leaders will be sent complete instructions for final project evaluation in September.
11. All exhibits will be judged on a modified Danish System. Scores will be blue—**Excellent**, red—**Very Good**, or yellow—**Good**. Rosettes will be awarded for the best exhibit judged **Excellent** in each department with at least three entries. Best of Class rosettes may be awarded at the discretion of the judges. Cash premiums will be awarded to all exhibits except those in Ribbon Only Classes, and Cloverbud members or members enrolled in a Cloverbud club. **Ribbons and premiums will be available for pick up on the last Sunday of the fair from 5 – 7 pm., at the Shotwell 4-H Exhibit Hall.**

When Shotwell Building Exhibits Have To Be On Fairgrounds

- ✿ Entries in the following Departments; *Forestry & Conservation, Child Care, Home Furnishings, Arts & Crafts, Art, Ceramics, Needlecraft, Photography, Construction and Hobbies & Collections.* must be received between 3:00 pm and 5:00 pm on the Sunday before the fair:
- ✿ *Club booth* and *Cloverbud Booth* displays may be set up between 3:00 and 9:00 pm on the Tuesday and/or Wednesday before the Fair.
- ✿ *Woodcraft Engineering; Clothing Construction* and *Shooting Sports* displays may be set up between 3:00 and 9:00 pm on the Tuesday and/or Wednesday before the fair. The Department Chairs will provide information regarding exact times for check-in.
- ✿ Entries in *Vegetables; Herbs; and Flowers* must be received and on display between 9:00 and 11:00 am on the first Friday of the fair.
- ✿ Entries in *Foods & Nutrition* and *Food Preservation* must be brought to the grounds between 9:30 am and 12:00 Noon on Wednesday of fair week.

Rules For Usage Of The Shotwell Building

- ✿ During the Fair, usage of the Shotwell 4-H Exhibit Hall for any purpose (including storage of materials) must be approved by the 4-H Office.
- ✿ The scheduling of all 4-H Learning Center programs during the fair must be arranged by the 4-H Exhibits Committee co-chairs.
- ✿ Only animals that are part of a Learning Center program may be in the building. Animals may not be lodged in the building.
- ✿ Animals that are part of a Learning Center program are allowed in the building no more than 15 minutes before and/or after such a program. Such animals are restricted to the stage area at all times.

DEPARTMENT 1

VEGETABLES - HOME GARDEN PRODUCTS

Department Chairperson: Deb Brodhecker, (973) 702-1223

RULES:

1. All Entry Rules must be followed.
2. Any Club Member may enter only one exhibit per class, for a total of seven (7) items in this department.
3. All exhibits must have been selected and grown by 4-H exhibitor and/or their families from the home garden.
4. All members must submit a form specifying each item by section code and class number to their 4-H leader. Then the leader will submit the 4-H member entry forms and record books for the entire club to the 4-H Office by July 1st.
5. All specimens displayed must be clean, but should not be washed. Slightly immature specimens will be accepted. All entries should be uniform in size, shape and color.
6. Exhibit the exact number asked for in each class or the entry will be disqualified.

SECTION AVE-Vegetables

Class Number and description

1. Bean, Snap: 5 pods	17. Pepper: Hot; 3 specimens, tops on
2. Bean, Lima: 5 pods	18. Pepper: Sweet; 3 specimens, tops on
3. Beets: 3 specimens; tops trimmed to 1”	19. Pumpkin: 1 specimen
4. Broccoli: 1 full head	20. Radish: 5 specimens
5. Cabbage: 1 head, outer leaves intact	21. Squash: Zucchini; 1 specimen
6. Cauliflower: 1 head	22. Squash: Yellow; 1 specimen
7. Carrot: 3 specimens, tops trimmed to 1 “	23. Squash: Patty pan & other; 1 specimen
8. Heirloom Tomatoes; any type; 3 specimens or 1 cluster for cherry varieties	24. Potato: 3 specimens
9. Chard, Swiss: 1 stalk; entire plant	25. Sweet Potato: 2 specimens
10. Corn, sweet: 2 ears	26. Tomato/Standard: 3 specimens
11. Cucumber: slicing: 2 specimens	27. Tomato/plum; 1 cluster
12. Cucumber: pickling: 5 specimens	28. Tomato/ cherry: 1 cluster
13. Eggplant: 1 specimen	29. Tomato/ other: 5 specimens
14. Onion: 3 specimens, tops trimmed to 1”	30. Watermelon: 1 specimen
15. Muskmelon: 1 specimen	31. Gourds: 3 specimens
16. Pea: 5 pods	32. Garlic
	33. Any other vegetable: 3 specimens

VEGETABLES—*continued*

SECTION CBE- Berries

One Pint

Class Number and description

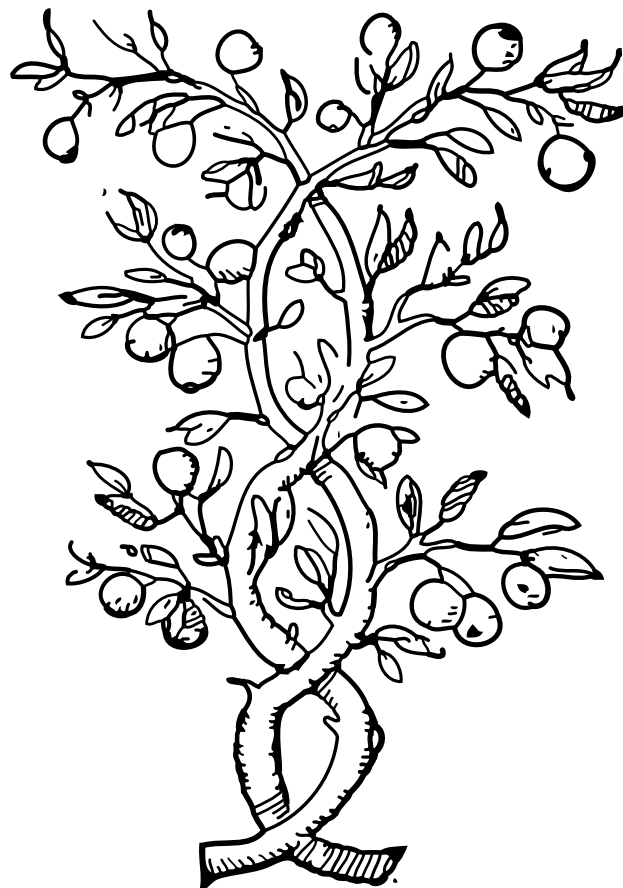
1. Blackberries	4. Strawberries
2. Blueberries	5. Any other berry
3. Raspberries	

SECTION DTR- Tree Fruits

Trees managed and cared for by member

Class Number and description

1. Apple: 3 specimens	5. Pear: 3 specimens
2. Apricot: 3 specimens	6. Plum: 3 specimens
3. Cherry: 5 Specimens	7. Any other fruit
4. Peach: 3 specimens	



DEPARTMENT 2

HERBS - HOME GARDEN PRODUCTS

Department Chairperson: Deb Brodhecker, (973) 702-1223

RULES:

1. All Entry Rules must be followed.
2. Any club member may enter only one exhibit per class, for a total of seven (7) items in this department.
3. All exhibits must have been selected and grown by 4-H exhibitor and/or their families from the home garden.
4. **All members *must* submit a form specifying each item by section code and class number to their 4-H leader. The leader will submit the 4-H member entry forms and record books for the entire club to the 4-H Office by July 1st.**
5. All specimens displayed must be *clean*, and should be washed. Slightly immature specimens will be accepted. All entries should be uniform in size, shape and color.
6. Exhibit the *exact* number asked for in each class or the entry will be disqualified.

SECTION BHE- Herbs

Three Stems in Water

Class Number and description

1. Basil	6. Oregano	11. Chives
2. Dill	7. Rosemary	12. Parsley
3. Lavender	8. Sage	13. Any other herb
4. Marjoram	9. Thyme	
5. Mint	10. Watercress	

DEPARTMENT 3

PLANTS & FLOWERS

Department Chairperson: Deb Brodhecker, (973) 702-1223

RULES:

1. All Entry Rules must be followed.
2. All exhibits must have been selected and grown by a 4-H exhibitor and/or their families from the home garden, and arranged by the club member.
3. A club member may enter only one (1) exhibit per class, for a total of seven (7) items in this department.
4. **All members *must* submit a form specifying each item by section code and class number to their 4-H leader. The leader will submit the 4-H member entry forms and record books for the entire club to the 4-H Office by July 1st.**
5. Exhibitors must provide their own containers and label with name and club on tape fastened to bottom of container. (No paper cups or other lightweight containers.)
6. Failure to exhibit exact number of stems called for in a particular class will cause the exhibit to be disqualified.
7. Cut flowers will be judged on quality and uniformity, flower arrangement and selection of container.

PLANTS & FLOWERS—*continued*

SECTION ANN- Annual Flowers

Grown and selected by member

Class Number with description

1. Ageratum: 3 stems with blooms	13. Coleus: 3 stems
2. Aster: 3 blooms	14. Nasturtium: (tropaeolum) 5 blooms
3. Calendula: (pot marigold) 5 blooms	15. Petunia: 3 blooms
4. Calliopsis: 5 blooms	16. Annual Phlox: 5 blooms
5. Celosia (coxcomb): 1 spike	17. Salvia Splendens: 5 blooms
6. Cornflower: (centaurea) 5 blooms	18. Scabiosa: (starflower, pincushion flower) 5 blooms
7. Cosmos: 3 stems in blooms	19. Snapdragon (antirrhinum): 3 spikes
8. Everlasting strawflower-Helichrysum: 5 blooms	20. Sunflower: 1 bloom
9. Dahlia: 5 blooms	21. Verbena: 3 blooms
10. Globe Amaranth (Gomphrena): 5 blooms	22. Zinnia: 5 blooms
11. Larkspur (annual delphinium): 3 spikes	23. Other: 3 blooms
12. Marigold: 5 blooms	

SECTION BIA- Biannual and Perennial flowers

Class Number with description

1. Achillea (Yarrows): 5 blooms	16. Gaillardia: 5 blooms
2. Aquilegia (Columbine): 3 blooms	17. Gerbera (Tranannual Daisy): 3 blooms
3. Bellis (English Daisy): 3 blooms	18. Hollyhocks (Alcea Rosea): 1 spike
4. Candytuft (Liberus): 3 blooms	19. Iris: 1 spike
5. Carnation: 5 blooms	20. Lobelia: 1 spike
6. Centaurea: 3 blooms	21. Pansy: 3 blooms
7. Chrysanthemum: 3 blooms	22. Peony: 1 bloom
8. Coreopsis (Pot of Gold): 5 blooms	23. Phlox: 3 stems
9. Daylily (Hemerocallis): 3 blooms	24. Pyrethrum (Parited Daisy): 5 blooms
10. Delphinium: 3 spikes	25. Rudbeckia (Coneflower): 3 blooms
11. Dianthus (Garden s): 5 blooms	26. Scabiosa (Pin Cushion flowers): 5 blooms
12. Digitalis (Foxglove): 1 spike	27. Stokesia (Stokes Aster): 3 blooms
13. Echinacea (Coneflower): 3 blooms	28. Other: 3 blooms
14. Shasta Daisy: 3 blooms	
15. Erigeron (Mid-Summer Aster): 3 blooms	

PLANTS & FLOWERS—*continued*

SECTION CUT- Cut Flowers

Grown from outdoor bulbs, corms or tubers

Class Number with description

1. Acidanthera: 1 bloom	6. Lily: 1 bloom
2. Chlidanthus: 3 blooms	7. Nerine Budenia (Guernsey Lily): 1 bloom
3. Dahlia: 1 bloom	8. Tigridia: 1 bloom
4. Gladiolus: 1 spike	9. Tuberose: 1 bloom
5. Gladiolus: 3 spike collection	10. Other: 1 bloom or spike

SECTION FLH- grown for home or patio

Grown for flowers or foliage, in pot, dish or basket, cared for by member at least 3 months.

Class Number with description

1. Achimedes	23. Gentiana
2. Aloe	24. Geranium
3. African Violet	25. Gloxinia
4. Amaryllis	26. Haemanthus
5. Amazon Lily (Eucharis)	27. Heron Flower (Pecteilis)
6. Anthurium	28. Ice Plant
7. Bromeliads	29. Impatiens
8. Browallia	30. Lipstick PLant
9. Tuberous Begonia	31. Mimulus
10. Wax Leaf Begonia	32. Passiflora (passion vine)
11. Cactus (varieties)	33. Pentas (Egyptian Star)
12. Calendula (pot marigold)	34. Pepernomia
13. Calceolaria (Pouch flower)	35. Philodendron
14. Calla Lily	36. Plumbago
15. Coleus	37. Portulaca
16. Eucharis (Amazon lily)	38. Primula (primrose)
17. Eucomis (pineapple lily)	39. Rhoeo Disiolar
18. Asparagus fern	40. Stock (midget)
19. Ferns Freesia	41. Succulents (varieties)
20. Fuchsia	42. Vinca (basket Periwinkle)
21. Garden Plan	43. Bonsai
22. Gardenia	44. Other

SECTION FLO - flower arrangements

Cloverbudared by the member from natural or artificial materials

Class Number with description

1. Mass arrangement: Circle	7. Line arrangement: Hogarth curve
2. Mass arrangement: Oval	8. Line arrangement: Crescent
3. Mass arrangement: Triangle	9. Line arrangement: Horizontal
4. Miniature	10. Line arrangement: Vertical
5. Novelty Creation with flowers	11. Line arrangement: Right angle
6. Topiary	12. Any other arrangement

SECTION GAR- Garden Accessories

Class Number with description

1. Stepping Stones	3. Fountains
2. Bird Baths	4. Miscellaneous

Phlox



Foxglove

Department 4

FORESTRY & CONSERVATION

Department Chairperson: Kate Foord (973) 948-3040

RULES:

1. All Entry Rules must be followed.
2. A club member may enter only one item per class, no duplicate items, for a total of 10 items in this department.
There are no exceptions for members in more than one club.
3. All members *must* submit a form specifying each item by section code and class number to their *4-H leader*. The leader will then submit the 4-H member entry forms and record books for the entire club to the 4-H Office by July 1st.
4. Exhibit the exact number asked for in each class or the entry will be disqualified.

SECTION ATR- Forest Tree or Wildlife Shrub Seedlings

(Label with common and scientific names, indicate age of seedling)

Class Number with description

1. Mounted twigs of 10 different native forest tree species
2. Mounted leaves of 10 different native forest tree species
3. Mounted fruits of 10 different native forest tree species
4. Mounted wood blocks of 10 different native forest tree species
5. Mounted tree bark of 10 different native forest tree species
6. Four average seedlings-raised from seed by 4-H member. Exhibit in 4" pots or together in one large pot or gallon can (example black locust, birch, etc.)
7. One balled and burlaped tree started from seed (3 or more years old)
8. Mounted leaves, twigs, and bark of 5 different native tree species
9. Miscellaneous

SECTION BFL - Wild Flowers

(Label each with common and scientific names, mount on display board or in picture frame under glass)

Class Number with description

1. Ten different native grasses
2. Ten different wild flowers
3. Five or more different native ferns or horsetails
4. Miscellaneous

SECTION CAN - Wild Animals

Class Number with description

1. Wild animal project booklet, including pictures of 10 animals and report on each
2. Collection of 3 or more plaster casts of wild animal tracks properly identified
3. Chart showing how wild animals help or work against man (5 or more animals)

FORESTRY & CONSERVATION—*continued*

4. Live cottontail rabbit traps - wood or metal
5. Record of detailed observations of 5 or more animals in the same class (*e.g. reptiles*)
6. Miscellaneous

SECTION DBI - BIRDS

Class Number with description

1. Birdhouse or feeder - made by member (*no kits*)
2. Any other article made or collected (*no kits*)
3. Bird Scrapbook - 10 or more bird pictures and description

ITEMS MADE FROM RECYCLED OBJECTS

Rules:

1. Items may not be purchased.
2. Items must be made from 3/4 worth of recycled objects. (*Examples: picture using seeds, bark and other natural materials; jewelry from sea shells, pine cones, etc.; miniature boat made from water bottles, etc.*)

SECTION ENR: Natural

Class Number with description

1. Items made from woodland objects
2. Items made from meadow objects
3. Items made from water objects (*Examples: sand, shells, driftwood, rocks, cattails, etc.*)
4. Items made from combination of one or more of the above.
5. Miscellaneous

SECTION FMM: Manufactured

Class Number with description

1. Items made from tin or aluminum
2. Items made from cardboard or paper
3. Items made from egg or milk carton
4. Items made from plastic
5. Items made from fabric (Example: item made from an old shirt)
6. Items made from combination of one or more of the above.
7. Miscellaneous

SECTION GHB: Hybrid (combination of Man-made and Natural materials)

Class Number with description

1. Not required—any combination of the materials listed in the Natural and Man-made sections is acceptable; this is an open class

DEPARTMENT 5

WOODCRAFT ENGINEERING

Department Chairperson: Vacant

RULES:

1. All Entry Rules must be followed.
2. A club member may enter only one item per class, no duplicate items, for a total of 4 items in this department.
No exceptions, for members in more than one club.
3. Camp crafts and school shop projects *may not* be exhibited in this department
4. *For judging purposes, please specify whether the project is made entirely with hand tools.*
5. All members *must* submit a form specifying each item by section code and class number to their 4-H leader. The leader will then submit the 4-H member entry forms and record books for the entire club to the 4-H Office by July 1st.

These sections have the following classes:

ABH - Basic Hand Tools	BHP - Hand Held Power Tools	CPB - Power Bench Tools
-------------------------------	------------------------------------	--------------------------------

Class Number with description

1. Straight board project	2. Curved edge board project
3. A project using two or more pieces of wood joined together.	4. Pre-cut or kit project

SECTION DCA - CARVING

Class Number with description

1. Use of hand tools only	2. Use of power tools	3. Pre-cut or kit project
---------------------------	-----------------------	---------------------------

SECTION EWB – WOODBURNING

Class Number with description

1. Shop built project with original woodburning design	2. Pre-made kit with original woodburning design kit
--	--

SECTION FIN – FINISHING

Class Number with description

Shop Built	Kit
1. Painting	5. Painting
2. Staining	6. Staining
3. Faux Finishing (sponge, marbleizing, rag, graining, etc.)	7. Faux Finishing
4. Stenciling	8. Stenciling

SECTION GAD - ADVANCED WOODWORKING

Class Number with description

1. Any item showing advanced construction skills approved by and made under the project leader’s supervision.
2. Advanced furniture kit item with project leader’s approval.

Department 6

CLOVERBUD CLUB EDUCATIONAL DISPLAY

Department Chairperson: Lisa Connelly, (973) 262-1076

RULES:

1. All Entry Rules must be followed.
2. A club that fails to obey the rules risks being barred from displaying at the following year's fair.
3. All Cloverbud Booths (Dept. 6) and Club Booths (Dept. 23) will be placed on one combined list in the order the entry forms are date-and time-stamped at the 4-H office. All entry spaces will be reserved on a first come, first served basis for all booth entries received by July 1st, whether in Dept. 23 or Dept. 6.
4. 4-H Cloverbud exhibits will fill a space not smaller than 4' wide x 4' high x 3' deep.
5. All 4-H Cloverbud exhibits should be the result of an organized 4-H Cloverbud club activity.
6. Exhibits should be presented as a club effort, arranged by members and leaders.
7. Members will receive Participation ribbons for their accomplishments, with no rating.
8. Clubs will receive a Participation rosette for their display.
9. Leaders must list members to exhibit on the entry form. Individual entry forms for each participating member must be entered to be eligible for fair passes.
10. The entry form must include the names and phone numbers of a primary and a secondary contact person who will be responsible for the setup and removal of the display. The department chairperson should be notified if the contact person changes after the form is submitted.
11. Dismantling of the displays will take place on the final Sunday of the fair between 5 and 6 pm.
12. When dismantling the display, the club must remove *all* hardware used for the display, including all staples and tacks and any fragments thereof.
13. After the fair, the booths and surrounding areas must be left clean and litter free. All decorative material (eg. gravel, sand, glitter, straw and birdseed) must be removed from the building.
14. Each entry contact person will receive a phone confirmation from the department chairperson by July 10th.
If you do not receive a confirmation by July 10th, you must contact the department chairperson.

SECTION PCD

Class Number with description

1. Banner
2. Display (composite of club's projects)
3. Posters
4. Scrapbook

Department 8

FOODS & NUTRITION

Department Chairperson: Phoebe Shotwell (973) 383-5698

RULES:

1. All Entry Rules must be followed.
2. A small portion of each entry will be exhibited with the placing received from the judges. The balance of the entry will be sold on the day of judging for the benefit of the 4-H program.
3. All perishable foods must be brought in on Wednesday of fair week by 12 noon in coolers with ice, and left in the coolers until judging is complete. Perishable foods must be taken home after judging. Submit a picture, photograph, or drawing of the entry with the recipe to be displayed in place of the entry.
4. Club members may exhibit in no more than 6 classes altogether in this unit.
5. Recipes must accompany each exhibit and should be printed on 3x5 cards. Substitution and variations should be noted. Include name, grade level, years of experience and age on recipe card.
6. Please bring food in/on disposable containers.
7. If food has been frozen, write the word *frozen* on the top of the recipe card.
8. If a microwave oven is used, indicate, *microwaved* on recipe card.
9. All entries and records must be appropriate for the age and ability of the club member and must be approved by the club leader prior to the fair.
10. All entries are to be the work of the individual club member.
11. All menus must use MyPlate and must include recipes and shopping lists. (for more information on MyPyramid go to their website – www.chooseMyPlate.gov.)
12. *All members MUST submit a form specifying each item by section code and class number to their 4-H leader. Then the leader will submit the 4-H member entry forms and record books for the entire club to the 4-H Office by July 1st*
13. *For Food Safety – hot foods must be kept hot, and cold foods cold for judging. Judges will NOT Judge entries if this rule is not followed.*

SECTION ABE - BEGINNER

Class Number with description

1. 4 (four) Drop Cookies-all one kind
2. 4 (four) No-Bake Cookies-all one kind
3. 3 (three) Drop or Rolled biscuits-plain or variation but all one kind
4. 4 (four) Cereal Candies-all one kind (ex. Rice Krispie® treats)
5. 4 (four) Nutritious Snacks-all one kind
6. Granola Mix-one cup in plastic bag.
7. Breakfast Plan-Shopping list, menu, and plan of place setting
8. 1 (one) Quick Coffee cake (baking soda/powder as leavening agent)
9. 4 (four) Refrigerator Cookies
10. 1 (one) Quick Bread containing fruit, vegetables or nuts (baking soda/powder as leavening agent)
11. 4 (four) Bar Cookies or Brownies-all one kind
12. 4 (four) pieces uncooked candy-all one kind
13. 3 (three) muffins-all one kind
14. 6 (six) Party sandwiches-a variety or all one kind
15. File Box or recipe booklet of tested recipes suitable for this unit.
16. Menu, market list, and plan of place setting for a luncheon
17. Nutritious Menu for a day using *ChooseMyPlate.Gov* (see above)- include recipes for one meal
18. 2 (two) Breakfast Waffles—any type
19. 2 (two) Dessert Waffles—any type

FOODS & NUTRITION (Continued)

SECTION BIN -INTERMEDIATE

Class Number with description

1. 4 (four) Cookie Press Cookies
2. 4 (four) Rolled and/or Cut-out cookies
3. 4 (four) Shaped Cookies (ex. pretzel shape, crescents, pinwheels, etc.)
4. 3 (three) Cupcakes - all one kind, iced, not in paper cups
5. 4 (four) layered bar cookies - all one kind; (two or more layers)
6. 1 (one) 1 layer cake (sheet cake) - any kind - may be iced
7. 1 (one) 2 layer cake-any kind-may be iced
8. Nutritious Menu for a day using Choose My Plate (<http://www.choosemyplate.gov/>, see above)- include recipes & shopping list
9. 1 (one) Loaf of Yeast Bread (direct method)-any kind
10. 3 (three) Pretzels
11. Plate of attractive raw vegetables (crudit )
12. 3 (three) Yeast Rolls - all one kind
13. 1 (one) Bundt or Pound Cake of any variety
14. 4 (four) pieces cooked candy - all one kind
15. Plan of dinner for parents including tasks, menu, and sketch of table (In booklet form)
16. Updated recipe file box or recipe book including tested recipes appropriate for this unit
17. Appetizer - Cold
18. Appetizer - Hot
19. Soup - may be brought in a thermos
20. 1 (one) Cheesecake
21. 1 (one) One Crust Pie

SECTION CAD -ADVANCED

Class Number with description

1. 1 (one) Two Crust Fruit Pie
2. 3 (three) Tarts
3. International Main Dish to serve 2 people
4. International Dessert (ex. tiramisu, cannolis, baklava, etc.)
5. 3 (three) Fancy Sweet Yeast Rolls - all one kind (ex. cinnamon rolls or sticky buns)
6. 1 (one) Chiffon or Sponge Cake
7. 1 (one) Angel Food Cake - may be plain, iced or glazed
8. 1 (one) Triple Layer Cake
9. 1 (one) Yeast Coffee Cake
10. Dessert Product (not otherwise listed)
11. 1 (one) Loaf of Sour Dough Bread
12. Meat Casserole to serve 2-4 people
13. Non-Meat Casserole to serve 2-4 people
14. Salad to serve 2-4 people (bring dressing separately)
15. Decorative place setting with menu and shopping list of food and other items (menu should be balanced and reflect a healthy lifestyle (see the Rutgers website for Get Moving Get Healthy, <http://www.getmovinggethealthynj.rutgers.edu/>)
16. Updated recipe file box or recipe book including tested recipes appropriate for this unit

FOODS & NUTRITION (Continued)

17. Party theme display poster (include theme with decorations, list foods to be served, shopping list, games or other entertainment and age of participants, i.e. teens, adults, children)
18. Game or crossword puzzle about nutrition or physical fitness
19. Audiotape, videotape or activity to promote good nutrition or physical fitness

SECTION DDF - DAIRY FOODS

Open to all 4-H Foods Members – any level

Class Number with description

1. Custard to serve 4 people
2. Pudding to serve 4 people
3. Cheese dish
4. Sour cream dip
5. Other dairy item
6. Any item above Cloverbudared in microwave oven

Department 9

FOODS PRESERVATION

Department Chairperson: Phoebe Shotwell (973) 383-5698

RULES:

1. All Entry Rules must be followed.
2. Exhibitor must bring two identical, full canning jars. Jars must be processed using recommended canning methods. One jar will be opened for judging, and may be picked up by member, leader or parent the same day as judging. Other jar will be displayed with the judge's rating for the rest of the Fair, and may be picked up on Sunday at close of fair.
3. No more than a total of six entries from each club member.
4. Items must be work of the member.
5. Recipes must be included.
6. All members must submit a form specifying each item by section code and class number to their 4-H leader. Then the leader will submit the 4-H member entry forms and record books for the entire club to the 4-H Office by July 1st.

SECTION JAR

Class Number with description

1. 2 jars of same jelly	6. 2 jars of pickles
2. 2 jars of same fruit	7. 2 jars refrigerator jam
3. 2 jars of same tomatoes	8. 2 jars refrigerator jelly
4. 2 jars of same jam	9. Other: 2 jars
5. 2 jars of same relish	

Department 10

CLOTHING CONSTRUCTION/ FASHION SHOW

Department chairpersons: Florence Constantine (973) 948-4435

RULES - Clothing

1. All Entry Rules must be followed.
2. A club member may enter up to five (5) items per year, but each one must be from a different class.
3. Fashion show and fair entries will be judged for all classes, except poster and 3-dimensional exhibits, prior to June 1.
4. A fair exhibit tag must be attached to each entry exhibited.
5. Only clothing projects pre-judged at judging sessions may be entered in this department at the fair.
All levels must be indicated on the entry form.
6. Clothing Premiums: *Excellent, Very Good, or Good.*
7. Items must be judged and exhibited at fair to complete a clothing project.
8. Items must be judged and modeled at the fashion show to complete fashion show project to be eligible for premiums.
9. Any type of sewing craft should be entered under Arts & Crafts, Home furnishings, Child Care, Etc. at the fair.
10. *All members must submit a form specifying each item by section code and class number to their 4-H leader. The leader will then submit the 4-H member entry forms and record books for the entire club to the 4-H Office by July 1st.*

RULES - Fashion Show

1. Rules same as clothing construction.
2. Honor Court Participants
3. 13 years of age or older by June 26 of the current year
4. Minimum of 2 years experience in the Clothing Project Area
5. Received a blue ribbon for their Clothing Project from the current 4-H year
6. Clothing Project is from an Intermediate or Advanced Class
7. Fashion Show Winner will be selected from the Honor Court participants.
8. The title Fashion Show Winner may not be presented to a 4-H Member more than once.

SECTION ABE – BEGINNERS (1st and 2nd year members)

Class Number with description

First Year Members		
1. Tote bag or beach bag	2. Handbag	3. Headscarf
4. Poncho	5. Apron	6. Jumper
7. Simple Dress (without waistline)	8. Vest	9. Blouse/shirt—no set in sleeves
10. Simple skirt	11. Simple slacks or shorts	
Second Year Members		
12. Nightgown/ Nightshirt	13. Robe with raglan sleeves	14. Pajamas
15. Slack set	16. Simple dress set in sleeves	17. Skirt with zipper & waistline
18. Blouse/Shirt with sleeves	19. It's up to you...	

CLOTHING CONSTRUCTION / FASHION SHOW—*continued*

Extras: slippers, purse accessories; travel accessories; closet accessories; scissor case; appliance covers; dresser scarf; placemats or tablecloth and napkins; stuffed animals or puppets; machine embroidered item; and surger items.

SECTION BIN – INTERMEDIATE (3rd, 4th, and 5th year members)

Class Number with description

1. Robe set in sleeves	2. Dress - long or short
3. Casual wear - 2 piece	4. Outfit - Wool or knit
5. Dress with collar, cuffs, and/or varied accessories to be made	6. Coordinated 3-piece ensemble-wear complete outfit modeling
7. Suit not tailored - pants or skirt	8. Jumper or skirt with blouse (long sleeve) - pocket or cuff
9. Coat, Jacket, or Down Vest - unstructured technique	10. Special fabrics-down vest
11. Nightgown/Nightshirt or pajamas	12. It's up to you...

SECTION CAD – ADVANCED (6 plus years as a member)

Class Number with description

1. Advanced dressmaking	2. Tailoring
3. Tailoring in Plaids	4. Special fabrics - raincoat
5. Design your own pattern for your own garment	6. Formal gown
7. Two-piece ensembles	8. Three-piece ensembles
9. Four-piece ensembles	10. It's up to you...

SECTION DPD - ALL LEVELS

Class Number with description

1. Poster Exhibit	2. Three Dimensional Exhibit
-------------------	------------------------------

SECTION ECO- CONSUMERISM

1. Complete purchased outfit including accessories

SECTION FAS - Fashion Show

1. All fashion show participants.

Department 11

CANINE STUDIES

Department Chairperson: Jonathan Clemmons (845) 858-0809

RULES:

1. All Entry Rules must be followed.
2. Exhibitors must be a member in good standing of a dog-related project.
3. A club member may enter only one item per class, no duplicate items, for a total of 5 items in this department. No exceptions, for members in more than one club.
4. All members must submit a form specifying each item by section code and class number to their 4-H leader. Then the leader will submit the 4-H member entry forms and record books for the entire club to the 4-H Office by July 1st.

SECTION A Educational Materials

Class Number with description

1. Electroboards
2. Poster (at least 5 pictures or charts with captions) or Artwork
3. Original booklet on dog-related topics (at least 350 words)
4. Scrap book
5. Miscellaneous

SECTION B Training Equipment

Class Number with description

1. Basic jumps
2. Advanced agility equipment
3. Collars/Leashes
4. Treats
5. Miscellaneous

SECTION C Furnishings and Accessories

Class Number with description

1. Toys
2. Apparel
3. Bedding
4. House, Kennel, or Shelter
5. Club Shirts
6. Miscellaneous



Department 12

CHILD CARE

Department Chairperson: Vacant

RULES:

1. All Entry Rules must be followed.
2. A Club member may only enter one item per class with no duplicate items in a class, for a total of ten (10) items for this Department; no exceptions for members in more than one club.
3. Items previously entered may **not** be entered again.
4. All Sunshine boxes and bath trays judged *Excellent* or *Very Good* may be taken to area hospitals, nursing homes or shelters.
5. *All members must submit a form specifying each item by section code and class number to their 4-H leader. The leader will submit the 4-H member entry forms and record books for the entire club to the 4-H Office by July 1st.*

SECTION CHC

Class Number with description

1. Homemade toy or game - Cloth	2. Homemade toy or game - plastic or wood
3. Homemade toy, game or puzzle - paper or cardboard	4. Storage device for toys
5. Clothing - infant	6. Clothing - preschool, self help type
7. Clothing - elementary school	8. Original story, picture book, song, etc.
9. Poster exhibit 22"x 22"	10. 3-dimensional exhibit - not larger than 2'x 2'x 1'
11. Doll Clothes (detailed outfit or complete wardrobe)	12. Sunshine box to occupy an ill person - toddler
13. Sunshine box to occupy an ill person – juvenile	14. Sunshine box to occupy an ill person – teenager
15. Sunshine box to occupy an ill person – adult	16. Plan a nutritious meal for a child for a week
17. Equip a bath tray – toddler	18. Equip a bath tray – juvenile
19. Equip a bath tray – teenager	20. Equip a bath tray - adult
21. Floor plan of a child’s room (include samples, sketches, or pictures)	22. Plan of activities for a certain age group, showing samples of activities
23. Research paper on childcare topic	24. Other

Department 13

NEEDLECRAFT

Department Chairperson: Vacant

RULES:

1. All entry rules must be followed.
2. A club member may only enter one item per class with no duplicate items in a class, for a total of ten (10) items for this department; no exceptions for members in more than one club.
3. All members must submit a form specifying each item by section code and class number to their 4-H leader. The leader will submit the 4-H member entry forms and record books for the entire club to the 4-H Office by July 1st.

SECTION A - Knitting

Class Number with description

1. Head band	2. Square
3. Potholder	4. Leg warmers
5. Two needle socks/slippers	6. Slippers with sole
7. Simple Vest	8. Simple sleeveless sweater
9. Simple Poncho	10. Simple Cable Stitch
11. Four needle socks	12. Scarf
13. Two needle mittens/hat	14. Pillow using one stitch
15. Vest with a 2-color pattern	16. Sleeveless sweater with 2-color pattern
17. Vest or sleeveless sweater with 3 or more color patterns	18. Sweater with three or more color pattern
19. Poncho with three or more color patterns	20. Simple knitted pattern - scarf, hat and mittens
21. Simple knitted pattern - sleeveless sweater or vest	22. Simple knitted pattern - poncho or shawl
23. Eight-row or more patterns - sweater or vest	24. 8-row or more patterns - poncho or shawl
25. Advanced Cable Stitch	26. Pillow using multiple stitches or with a design.
27. Miscellaneous suitable for this level	

NEEDLECRAFT—*continued*

SECTION B - Crocheting

Class Number with description

1. Simple item using single crochet	2. Simple item using double crochet
3. Simple item using rounds	4. Simple item using other stitches
5. Two-color potholder	6. Simple vest or shrink
7. Poncho or cape	8. Mittens/hat
9. Baby outfit	10. Animals/toys
11. Pillow	12. Afghan
13. Article using Popcorn Stitch	14. Article using Granny Square
15. Article using Shell Stitch	16. Article using Broomstick Lace
17. Article using Loop Stitch	18. Afghan with embroidery
19. Miscellaneous	

SECTION C - Embroidery and Crewel

Class Number with description

1. Stamped cross-stitch	2. Embroidered item using a variety of stitches (chain stitch, back stitch, satin stitch, stem stitch, etc.)
3. Chicken scratch	4. Candlewicking
5. Crewel item using a variety of stitches (wool yarn)	6. Counted cross-stitch
7. Huck embroidery	8. Smocking
9. Entry using original design	10. Miscellaneous

SECTION D - Needlepoint

Class Number with description

1. Plastic canvas	2. Long Stitch
3. Pillow or picture using needlepoint canvas	4. Bargello
5. Belt or other small item	6. Entry using original design
7. Miscellaneous	

SECTION E -Quilting

Club member may submit machine or hand sewn entries.

Class Number with description

1. Pillow- pieced	2. Pillow - appliqued
3. Wall hanging	4. Crib quilt-pieced
5. Crib quilt - appliqued	6. Bed Quilt-pieced
7. Bed quilt - appliqued	8. Clothing
9. Entry using original design	10. Miscellaneous

NEEDLECRAFT—*continued*

SECTION F -Other Needlecraft (latch hook, braiding, weaving, etc.)

Latch hook entries must have correct accessories for intended use; for example, pillow inserts for pillows, rug binding for rugs, frames or clips suitable for hanging latch hook pictures.

Class Number with description

1. Items made with punch needle	2. Items made with latch hook
3. Braided rug	4. Lace net darning
5. Pillow made using sewing machine	6. Trapunto
7. Weaving	8. Entry using original design
9. Miscellaneous	

SECTION G—Natural Fibers

Class Number with description

1. Sample of carded wool	2. Sample of wool felt
3. Sample of spun wool	4. Item made from wool felt
5. Item made from spun wool	6. Item made from combination of wool materials; nothing processed
7. Hand Felted Item (needle felting, not from “sheet” felt or yardage). Item should be needled with hand felting needle from natural fiber	8. Miscellaneous

SECTION H — Hand Sewn Items

Class Number with description

1. Clothing	2. Accessory
3. Sculptural Item (not stuffed toys)	4. Miscellaneous

SECTION I—Machine Sewn Items

Class Number with description

1. Clothing	2. Accessory
3. Sculptural Item (not stuffed toys)	4. Miscellaneous

Department 14

HOME FURNISHINGS

Department Chairperson: Vacant

RULES:

1. All entry rules must be followed.
2. A Club member may only enter one item per class with no duplicate items in a class, for a total of ten (10) items for this Department; no exceptions for members in more than one club.
3. Include photographs, sketches, or samples of other colors, design and textures in room.
4. Items previously entered may not be entered again.
5. All members must submit a form specifying each item by section code and class number to their 4-H leader. The leader will submit the 4-H member entry forms and record books for the entire club to the 4-H Office by July 1st.

SECTION HOM

Class Number with description

1. Curtains or draperies	2. Bedspread
3. Decorative bed linens	4. Rugs
5. Desk accessories (desk pad, pencil & letter holders, etc.)	6. Room accessories (stuffed decorative item [not including stuffed animals] mobile, hand made picture frame [not made from plastic canvas] fabric covered book [5"x 7" or larger], decorative wastebaskets, decorative hoops for wall decorations)
7. Lamp constructed or improved	8. Handmade lamp shade (fabric or paper)
9. Storage devices or closed organizer (new or improved)	10. Table linens (tablecloth or placemats- napkins optional, dresser scarf, table runner or doilies)
11. Appliance covers or decorative potholders	12. Table Centerpiece
13. Seasonal door decorations	14. Slip covers
15. Upholstered chair seat or chair pads	16. Caned or rushed chair or stool
17. Piece of furniture constructed	18. Piece of furniture refinished
19. Before and after photographs or sketches of home improvements (mounted and labeled)	20. Portfolio or sketchbook of home furnishing ideas (mounted and labeled)
21. Floor Plans on graph paper with furniture placement included (mounted and labeled)	22. Scale model of room
23. Dream room scrapbook	24. Original design of home furnishing item
25. Three-dimensional exhibit no larger than 2' x 2' x 1'	26. Poster
27. Miscellaneous	

CREATIVE ARTS & CULTURAL CRAFTS

Department Chairperson: Lisa Connelly (973) 262-1076

RULES:

1. All entry rules must be followed.
2. A Club member may only enter one item per class with no duplicate items in a class, for a total of 10 items for this department; no exceptions for members in more than one club.
3. Arts & Crafts items entered in this department must have been made by a 4-H Club member during this project year.
4. Articles must be produced as a result of a 4-H club member's participation in a 4-H project area. (articles made in school shop or home economics classes, or as a result of other than 4-H activity, are not eligible).
5. Kits are not allowed, except when basic items are needed to begin a project. However, the finished project should show a member's originality and creativity
6. A wire hanger must accompany each t-shirt and/or sweatshirt entry.
7. Some crafts need to be displayed in a group (ex. 4 napkin rings, 4 party favors, bouquet of 4 flowers, etc.)
8. All members must submit a form specifying each item by section code and class number to their 4-H leader. The leader will submit the 4-H member entry forms and record books for the entire club to the 4-H Office by July 1st.

SECTION CAC

Class

1. Creative writing (short story, poetry, etc.)	18. Stenciling-on any thing; except wood
2. Holiday crafts	19. Basketry-woven, decorated, etc.
3. Paper crafts	20. Folk painting
4. Fabric crafts /Dolls/Animals	21. Party favors-table cloth or placemats, napkin favors, hat and centerpiece
5. Wood craft	22. Candles-poured, dipped, carved, decorated, etc.
6. Yarn craft	23. Paper mache-animals, piñata, etc.
7. Macramé	24. Shrink art
8. Stone & shell crafts	25. Wreaths
9. Leather craft	26. Floral centerpieces-using artificial/dried flowers, etc.
10. Metal craft	27. Decoupage-eggs, wood, metal, etc.
11. Bead craft	28. T-shirt art (except appliques)
12. Bottle craft	29. Appliqué art (including sweatshirts)
13. Fabric painting	30. Embellished shoes
14. Styrofoam craft	31. Puppets
15. Pompom crafts	32. Bread dough crafts
16. Soap crafts-Soap carving, decorated soap, etc.	33. Broom crafts
17. Shadow box /diorama	34. Stamp craft

CREATIVE ARTS & CULTURAL CRAFTS—*continued*

35. Duct tape crafts
36. Decorated flower pot
37. Tile crafts-tile magnets, earrings, etc.
38. Miscellaneous

RULES for Camp Crafts only

Exhibits must be made at summer camp, no record book required and open to all youngsters in Grades 4–13. Entry form *must* include name, address, and phone number of exhibitor.

39. 4-H camp crafts-any craft item made at camp

Department 16

ART

Department Chairperson: Lisa Connelly (973) 262-1076

RULES:

1. All entry rules must be followed.
2. A club member may only enter one item per class with no duplicate items in a class, for a total of 10 items for this department; no exceptions for members in more than one club.
3. All items must be original artwork of member.
4. Item exhibited must have been done during the current year.
5. Articles must be produced as a result of a 4-H club member's participation in a 4-H project area.
6. All items to be hung must be presented as follows: a) in a durable frame equipped with strong wire or other sturdy device appropriate for hanging on a hook, or b) properly mounted on a firm backing with a mat. Items displayed in document frames or easel-backed photo frames are subject to disqualification.
7. All members must submit a form specifying each item by section code and class number to their 4-H leader. Then the leader will submit the 4-H member entry forms and record books for the entire club to the 4-H Office by July 1st.

SECTION A - Drawing

Class Number with description

1. Black lead pencil	2. Colored Pencils	3. Charcoals	4. Pastels
5. Magic Markers	6. Mixed media	7. Conté	8. Crayon
9. Sand Art Drawing	10. Drawing done on computer (<i>ex. drawings done with a graphics pad and/or using computer assisted drawing</i>)		11. Miscellaneous drawing

SECTION B - Painting

Class Number with description

1. Water colors	2. Acrylics	3. Tinsel painting	4. Oils
5. Mixed media	6. Watercolor pencil	7. Miscellaneous painting	

SECTION C - Sculpture

Class Number with description

1. Metal	2. Wood	3. Clay Piece	4. Cast
5. Mixed media	6. Sculpty (also includes jewelry)	7. 3-D Printed-Original Design	8. 3-D Sculpture assembled from print, computer images, etc.
9. Miscellaneous Sculpture			

SECTION D - Other Art

Class Number with description

1. Collages	2. Mixed media	3. Poster art (includes National 4-H)	4. Plaster of Paris
5. Vegetable/fruit printing	6. Scratch Art	7. Origami (paper folding)	8. Miscellaneous

Department 17

CERAMICS

Department Chairperson: Lisa Connelly (973) 262-1076

RULES:

1. All entry rules must be followed.
2. Articles must be produced as a result of a 4-H Club Member's participation in a 4-H project area.
3. Only one entry per class for a total of up to six (6) entries per member eligible for premiums; no exceptions for members in more than one club.
4. All members must submit a form specifying each item by section code and class number to their 4-H leader. The leader will submit the 4-H member entry forms and record books for the entire club to the 4-H Office by July 1st.

SECTION CER

Class Number with description

1. Stained item	2. Plain glazed item
3. Combination glazed object	4. Plain underglazed object
5. Detailed underglazed	6. Hand molded
7. Decals	8. Fired gold decoration
9. Matte glaze	10. Other types

PHOTOGRAPHY

Chairperson: 4-H Staff

RULES:

1. All entry rules must be followed.
2. A Club member may only enter one (1) item per class with no duplicate items in a class, for a total of ten (10) items for this Department; no exceptions for members in more than one club.
3. A club member must be enrolled in 4-H to exhibit
4. Photos must have been taken during the current year.
5. Photo must be at least a 5" x 7" enlargement and properly mounted. Properly mounted constitutes: mounted on a firm backing with a minimum of 8" x 10" matting. *No framed items will be accepted.*
6. All members **must** submit a form specifying each item by section code and class number to their 4-H leader. The leader will submit the 4-H member entry forms and record books for the entire club to the 4-H Office by July 1st.

SECTION A—PHOTOGRAPHY

Class Number with description

<p>1. Animals—Domestic Photos focusing on the various animals that have been tamed and are found in a human environment. To be considered domesticated, the animal must have their behavior, life cycle, or physiology systemically altered as a result of being under human control for many generations.</p> <p><i>Examples include:</i> dog, sheep, pig, goat, cow, cat, chicken, horse, alpaca, goose, duck, hamster, etc.</p>	<p>4. Details & Macro Getting in close is the name of the game for this category. We welcome pictures of small details that suggest a larger story. This is also the place for macro photographs (although a macro image of a flower might equally go into the Flowers category).</p> <p><i>Examples include:</i> detail of a knot, a lock, or an abstract close-up - anything as long as it is a tight composition of a detail. Macro examples include flowers, insects, stamps, ice crystals, etc.</p>
<p>2. Animals—Wildlife Category focuses on animals not tamed or domesticated and commonly found in the wild throughout the country and world. Photos can be of wildlife in nature, zoos, and/or petting zoos.</p> <p><i>Examples include:</i> deer, snakes, insects, rodents, elephants, etc.</p>	<p>5. Digital Darkroom Photos are for digital art - images created or drastically altered in software such as Adobe Photoshop/Elements®. Although digitally manipulated images are also allowed in the other categories, this is a category exclusively showcasing such art. If the digital darkroom work is the main attraction of the photo, or plays a big part, enter it here.</p> <p><i>Examples include:</i> Photoshop® composites and creations, images greatly manipulated with a variety of filters, photos with artistic borders, photos stitched into a panoramic.</p>
<p>3. Catch-All Category for photos that do not fit into one of the other categories. This includes such photos as still-life, motion-blur, Polaroid transfers, hand-colored photos.</p> <p><i>Examples include:</i> Polaroid image & emulsion transfers, still-life, long exposure zoomed images, and painting with light.</p>	

<p>6. Dominant Color Photos with a dominant color. The dominant element in the image must be a specific color, such as red, yellow, blue, white, black, white, green, etc.</p> <p><i>Black & White photos, duotones, are excluded from this category.</i></p>	<p>11. Night Photography Photos taken outdoors between dusk and dawn. Generally these photos are achieved by using artificial light or using a long exposure. This category can include any subject as the focus should be on the skill and technique used to acquire the photograph.</p> <p><i>Examples include:</i> buildings/structures, animals, plant/flora, people, etc.</p>
<p>7. Elements of Design Images use of graphic elements of design. Photos that showcase line, shape, pattern, form, texture, perspective, etc. Photo can consist of any subject matter. Category is not for graphic illustrations made in commercial programs (i.e. Adobe Illustrator®) nor for extreme digital creations.</p> <p><i>Examples include:</i> perspective, line, pattern</p>	<p>12. People Photos focus from all walks of life, parenting and family, children, babies, models/ fashion, sports, and couples.</p> <p><i>Examples include:</i> kids & family, models/fashion, sports</p>
<p>8. Food Category is a still life specialization of photography, aimed at producing attractive photographs of food for use in such items of advertisements, packaging, menus and/or cookbooks. <i>No photos of alcohol beverages are allowed.</i></p> <p><i>Examples:</i> Thanksgiving dinner, cakes/pies, fruits and place settings, Easter eggs, sandwiches, ingredients, etc.</p>	<p>13. Plant/Flora Photos of interesting, unique, and beautiful flowers and flora. Photography can occur outdoors or indoors. Photo subject should be that of a single flower, plant, bush, tree, etc. Large collections of plant/flora should be considered for entry into the Nature & Landscape category.</p> <p><i>Examples include:</i> a rose, an upward shot of a tree, a flower bouquet, etc</p>
<p>9. Marine/Aquatic Photos of any living organism in bodies of either fresh or ocean (salt) water.</p> <p><i>Examples include:</i> fish, stingrays, whales, starfish, etc.</p>	<p>14. Storyboard A storyboard is one digital entry that contains three photos and minimal text that tells a story. The story should be easily understood by the viewer.</p> <p><i>Example include:</i> Three images depicting the blooming of a rose bud at different stages, with the title, <i>Beginning of Beauty.</i></p>
<p>10. Nature & Landscape The focus of this category includes landscapes, outdoor scenes, nature images, sunsets, urban landscapes, seascapes, cityscapes, and farms. Images focus on the beauty of the outdoors.</p> <p><i>Examples include:</i> landscapes, scenes, outdoors</p>	

Department 19

HOBBIES & COLLECTIONS

Department Chairperson: Vacant

RULES:

1. All Entry Rules must be followed.
2. Scrapbook entries should contain only the current year’s work.
3. Collections may include items from previous years, as long as current items are clearly marked as such, and satisfy the entire category requirements: (number of items, proper mounting, etc.).
4. Report or displays must be in a case, a frame or on stiff cardboard covered with plastic. Sizes up to 16” x 20”.
5. Only one entry per class, for a total of up to 6 items.
6. Upon request, valuable object will be exhibited in a locked cabinet, whenever possible.
7. *All members must submit a form specifying each item by section code and class number to their 4-H leader. Then the leader will submit the 4-H member entry forms and record books for the entire club to the 4-H Office by July 1st*

SECTION A – STAMPS

Class Number with description

1. United States display	2. Foreign Country display
3. Tropical display	4. First-day covers, postal stationery and others
5. Postmarks, slogans and postal jargon, and meters	6. Original design stamp created by 4-H member
7. Original design—first-day cover created by 4-H member	8. Original design – for special occasions
9. Other Philatelic collectibles not listed above	10. A 4-H member’s stamp tool kit – made by member
11. A stamp display combined with another related collectible, plant or food project (ie. farm animal stamps, old milk bottles displayed together, jam, fruit, and cactus)	
12. Original designed stamp album by 4-H member	13. Miscellaneous stamp display

SECTION B – STONES OR SHELLS

Class Number with description (At least 6, mounted and labeled)

1. Any stone collection.	2. Any shell collection.
--------------------------	--------------------------

SECTION C – SCRAPBOOKS

Class Number with description

1. Project Year	2. Personal (non 4-H)	3. Other
-----------------	-----------------------	----------

HOBBIES & COLLECTIONS (Continued)

SECTION D – CONSTRUCTION TOYS

Class Number with description

1. Simple item from kit	2. Advanced item from kit
3. Simple item from original design	4. Advanced item from original design
5. Miscellaneous	

SECTION E – MODEL RAILROADING

Class Number with description

1. Locomotive custom ready to roll (i.e. weathered, customized paint decals, detailing)	2. Locomotive assembled with a kit
3. Freight car assembled from a kit	4. Freight car ready to roll (i.e. weathered, custom paint decals, detailing)
5. Passenger car modified ready to roll	6. Passenger car assembled from a kit
7. Structures assembled from a kit	8. Structures scratch built (if built from prototype include descriptive paragraph and/or photo.)
9. Diorama limit size 2' x 4' must include descriptive paragraph.	

SECTION F – OTHER COLLECTABLES

Class Number with description

1. Sports/comics/TV/Movie Cards (at least 10 mounted or in album pages with captions)	2. Seals or stickers (at least 10 mounted or in album with captions)
3. Bottles, limit 12 per member (arranged for proper display.)	4. Radio Control Vehicles
5. Pogs (at least 10 mounted or in album pages with captions)	6. Postcards (at least 10 mounted or in album pages with captions being at least two sentences or a report on all cards in trip put at the front.
7. Other mounted or arranged for proper display	

Department 20

CONSTRUCTION

Department Chairperson: Vacant

RULES:

1. Exhibitors must be members of a 4-H club whose project involves the building and/or design of items using construction components such as K'nex, Legos, etc.
2. Only one entry per class for a total of 3 entries in this department.
3. All Entry Rules must be followed.
4. All entries are to be the work of the individual club member.
5. All members *must* submit a form specifying each item by section code and class number to their 4-H leader. Then the leader will submit the 4-H member entry forms and record books for the entire club to the 4-H Office by July 1st

SECTION CON

Class with description

1. Research and Design Project—must be pre-approved by the club leader; must include a report and completed model of a specific type of structure. (such as a building, vehicle, bridge, or crane)
2. Any item from original design
3. Miscellaneous

4-H SHOOTING SPORTS

Department Chairperson: 4-H Staff

RULES:

1. All Entry Rules must be followed.
2. All entries are to be the work of the individual club member.
3. All submitted targets and scorecards must be signed by a certified shooting sports instructor.
4. All items will be in conjunction with a 4-H'ers work in the shooting sports project.
5. All rifle targets will be scored following 4-H/NRA postal match rules.
6. All archery entries will utilize instinctive shooting.
7. All rifle and muzzleloader entries will utilize iron sights. The use of scopes is prohibited
8. Only one entry in each class. Maximum of eight entries in this division.
9. All members must submit a form specifying each item by section code and class number to their 4-H leader. Then the leader will submit the 4-H member entry forms and record books for the entire club to the 4-H Office by July 1st

SECTION A: ARCHERY	SECTION B: PELLET RIFLE
Class with description	Class with description
1. 10 Yards—48: 10 ring target – 5 arrows	1. 10 Meters—Kneeling Position—10 shots, AR-5/10 NRA targets
2. 20 Yards—48: 10 ring target – 5 arrows	2. 10 Meters—Standing Position—10 shots, AR-5/10 NRA targets
3. 30 Yards—48: 10 ring target – 5 arrows	3. 10 Meters—Prone Position—10 shots, AR-5/10 NRA targets
4. 10 Yards (with site)—48: 10 ring target – 5 arrows	
5. 20 Yards (with site)—48: 10 ring target – 5 arrows	
6. 30 Yards (with site)—48: 10 ring target – 5 arrows	
SECTION C: .22 cal. RIFLE	SECTION D: MUZZLE LOADER
Class with description	Class with description
1. 50 feet—Kneeling Position—10 shots, A-17 NRA target	1. 25 Yards—Bench Position – 5 shots
2. 50 feet—Standing Position—10 shots, A-17 NRA target	
3. 50 feet—Prone Position—10 shots, A-17 NRA target	
4. 50 yards—Kneeling Position—10 shots, target TBD	
5. 50 yards—Standing Position—10 shots, target TBD	
6. 50 yards—Prone Position—10 shots, target TBD	

4-H SHOOTING SPORTS (Continued)

SECTION E: TRAINING ARTICLES

Class with description

1. Primitive bow

2. Primitive arrow

3. Leather construction

4. Wood construction

5. Fabric construction

6. Miscellaneous combined construction

Department 23

4-H EDUCATIONAL CLUB BOOTH DISPLAY

Department Chairperson: 4-H Staff

RULES:

1. All entry rules must be followed.
2. The entry form must include the names and phone numbers of a primary and a secondary contact person who will be responsible to coordinate set-up and removal of the display. The department chairperson should be notified if the contact person changes after the sheets are submitted.
3. All Club Booths (Dept. 23) and Cloverbud Booths (Dept. 6) will be placed on one combined list in the order the entry forms are date-and-time stamped at the 4-H office. All entry spaces will be reserved on a first-come, first-served basis for all booth entries received by July 1st, whether in Dept. 23 or Dept. 6.
4. The dimensions of the booth shall be 4 ft. wide, 3 ft. deep and 4 ft. high. Displays should not exceed these dimensions.
5. Valuable items should not be used in the display since no coverage is provided for lost items.
6. Members will plan and set up their club display with guidance from club leaders and parents.
7. No product in the display will be eligible for individual member awards.
8. An entry form must be submitted by July 1st. The club's name, not an individual's, should be listed at the top of the form. All members participating in their booth's construction must submit individual registration sheets to be eligible for fair passes.

Judged on the following criteria:

- A. Power to attract and hold attention
- B. 4-H story told as it relates to theme (yearly theme will be determined by department chairs, 4-H professional staff, and 4-H Advisory Council). Theme will be announced in the 4-H newsletter. *Leader* All club booths must follow theme.
- C. General appearance and quality (No bare wood, all fabric and lettering securely fastened)
- D. Originality and effort shown by club

Premiums: Excellent: \$10.00, Very Good: \$8.00, and Good: \$6.00.

Each entry contact person will receive a phone confirmation from one of the department chairpersons confirming registration by July 10th. *If you do not receive a telephone call by July 10th, you must call the department chairperson to confirm your registration.*

Dismantling of the displays will take place on the final Sunday of the fair between 5 and 6 pm.

Upon dismantling the display, clubs must remove all hardware used for the display, including all staples and tacks and all fragments thereof. ***Non-compliance with this rule may result in forfeiture of cash premiums.***

After the fair, the booths and surrounding areas must be left clean and litter free. All decorative material (eg. gravel, sand, glitter, straw and birdseed) must be removed from the building.

Judges for this department will serve a term of one year and will ***not*** serve another term as a judge for the same department for 3 years.

SECTION CBD

Class with description

1. Club booth display

Department 24

MODEL HORSE

Chairperson: Nancy Espinosa (973) 300-5058

RULES:

1. All entry rules must be followed.
2. Exhibitors must be enrolled in Sussex County 4-H club and meet Member in Good Standing requirements.
3. Exhibitors must have submitted a REcord Book to the 4-H Office.
4. *All members must submit a form specifying each item by section code and class number to their 4-H leader. The leader will submit the 4-H member entry forms and record books to the 4-H Office by July 1st*
5. Each model must have an entry tag fastened to a hind leg that cannot be easily removed. A string tag should be used. Entry tags must include entrant's name on one side and name of the horse and breed on the other.
6. It is expected that the exhibitor be available to manage each model and take it to the judging table.
7. Parents are permitted to assist exhibitors with the unpacking /packing of all models, props, etc.
8. A single model may show in more than one class. Class limits are three entries per exhibitor per class. If you anticipate a tack change, please inform the ring steward or judge. *Participants are eligible for a maximum of 10 premiums paid for this department.*
9. Judging will take place in the Agricultural Show Arena
10. Awards: Flat ribbons (1st through 6th) in all classes. Champion & Reserve Champion in Halter, Performance and a combination of remaining sections (Costume, By Exhibitor & Miscellaneous).

SECTION AHD - HALTER

Models do not need tack, but if used must be appropriate for that model.

Class Number with description

1. Arabian	2. Appaloosa	3. All ponies
4. All draft	5. Gaited Breeds	6. Thoroughbred/Standardbred
7. Paint/Pinto	8. Morgan	9. Quarter Horse
10. Warmbloods/Sport Horses	11. Other Purebreds	

SECTION CPD - PERFORMANCE

Models do not need tack, but if used must be appropriate for that model.

Class Number with description

1. English Pleasure	2. Other English (Dressage, Polo, Racing)	3. Hunter/Jumper/Cross Country
4. Western Pleasure	5. Other Western/Western Games	6. English or Western Trail

MODEL HORSE (Continued)

SECTION DCO–COSTUME

Class Number with description

- | |
|--|
| 1. Realistic Costume (Arabian, Parade, etc.) |
| 2. Creative Costume |

SECTION EID–By Exhibitor

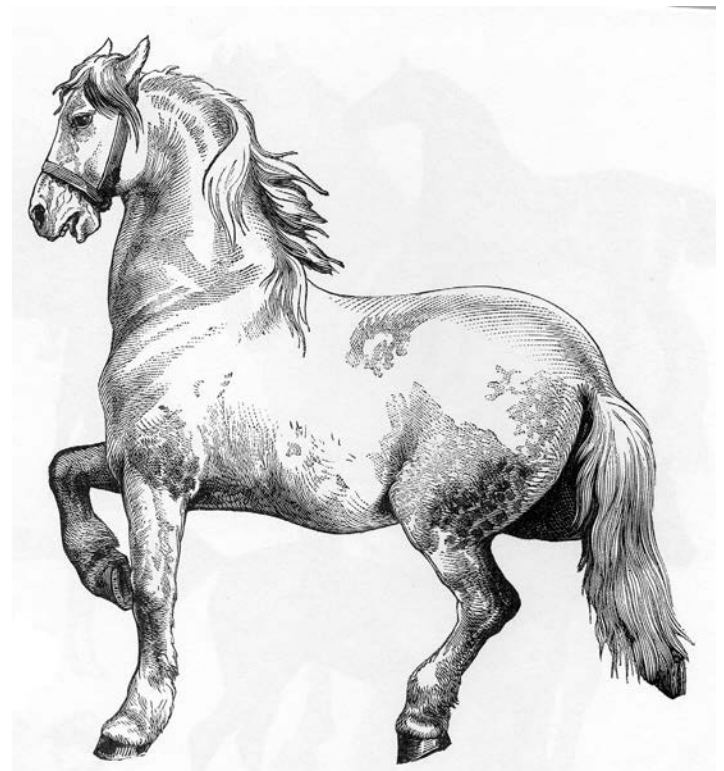
Class Number with description

- | |
|------------------------------|
| 1. All tack |
| 2. Repaint/Haired/Customized |

SECTION FMC–MISCELLANEOUS CLASSES

Class Number with description

- | |
|--------------------|
| 1. Decorative |
| 2. Fantasy |
| 3. Other Animals |
| 4. Harness/Driving |
| 5. Creative Scene |



Department 27

FELINE STUDIES

Department Chairperson: Roberta Brandau (973) 875-5894

RULES:

1. All Entry Rules must be followed.
2. Exhibitors must be a member in good standing of a feline-related project.
3. A club member may enter only one item per class, no duplicate items, for a total of 5 items in this department. No exceptions, for members in more than one club.
4. All members *must* submit a form specifying each item by section code and class number to their 4-H leader. Then the leader will submit the 4-H member entry forms and record books for the entire club to the 4-H Office by July 1st.

SECTION A Show Classes

Class Number with description

1. Grooming and Showmanship
2. Largest Cat
3. Smallest Cat
4. Most Colorful
5. Costume Class
6. Most Tricks
7. Written Test

SECTION B Furnishings and Accessories

Class Number with description

1. Cat Book
2. Cat Toy
3. Paper Cats
4. Cat Figurines
5. Cat Equipment
6. Miscellaneous

When Livestock Animals Have To Be On The Fairgrounds

4-H Rabbits & Cavy	Must be on the fairgrounds by 10:00 a.m. on the first Friday of the Fair A veterinarian will check in animals when they are received.
4-H Goats	Must be on exhibit by 10:00 a.m. on the first Friday of the fair All milking animals and nursing kids shall be brought in on the day of the show only.
4-H Market Animals	Must be on the Fairgrounds by 8:00 a.m. Monday of fair week with the weigh- ins between 8:00 and 10:00 am on Monday of Fair Week. Failure to have your animal on the grounds by 8:00 a.m. or to be weighed in will forfeit the right to show in the Market Animal Sale classes.
4-H Beef	Must be on exhibit by 12:00 noon on the first Saturday of fair week
4-H Breeding Sheep	All other breeding sheep exhibits must be on display no later than 9:30 am Wednesday of the fair, at the AG President's discretion. 4-H members that are <i>not</i> participating in the 4-H Market Animal Show are required to bring their sheep breeding projects by 10:00 am on the first Friday of the fair.
4-H Swine	Must be on the Fairgrounds by 12:00 noon the first Saturday of fair week.
4-H Dairy	Non-milking animals must be on the grounds between 12:00 p.m. and 9:00 p.m. on Monday of fair week. Registration papers and health records must be checked by the time of the animal's show. Milking animals may arrive on the day of the show.

Project Record Book Requirements:

Record books *must* be submitted to the local 4-H Club leader for evaluation and review along with the *4-H Member Entry Form* by the specified deadline for your project area.

Record books for all 4-H livestock department entries must be completed as specified by the rules for each department and submitted with the *4-H Member Entry Form*. Entries received without record books will *not* receive cash premiums. The 4-H leader *should not* sign the *4-H Member Entry Form* unless current project records are submitted. All 4-H leaders are asked to cooperate by collecting the *4-H Member Entry Form* and any necessary record books for each member. Then the 4-H leader or an adult designated by the club leader must submit all the *4-H Member Entry Forms* and record books from their club to the 4-H office *no later than July 1st* no matter what day it happens to fall on. If the 1st falls on a Saturday or Sunday the entry forms and record books are due the Friday before. The 4-H office is located at 130 Morris Turnpike, Newton, NJ (Frankford Twp.), across from the Sheriff's Department Office of Emergency Management.

If barn space is available all 4-H animals must remain from their show date until the end of the Fair or forfeit the premiums paid by the New Jersey State Fair®/Sussex County Farm And Horse Show.

All exhibitors must abide by the Health Requirements in the Livestock Exhibitor and General Health Information section of the New Jersey State Fair®/Sussex County Farm and Horse Show website, <http://www.njstatefair.org/> Water at the Fairgrounds may contain chlorine to combat harmful bacteria.

Updated Revisions to Animal Health Requirements (March 5, 2012)

Rabies Vaccination

A current rabies vaccination is required for all species for which there is a USDA licensed vaccine available (cattle, horses, sheep, dogs, cats, ferrets). An acceptable proof of rabies vaccination must be presented at the vet check at the Fair. *Note: Rabies titers are not acceptable proof of rabies protection and cannot be used for entry requirements.*

Owners of animal species that do not have an approved rabies vaccine should discuss with their veterinarian the pros and cons of having their animal vaccinated against rabies with an "off label" rabies vaccine.

Animals not vaccinated for rabies are to be separated from the public by sufficient means so as to disallow direct animal/public contact (as per New Jersey Department of Agriculture).

During the Fair if an animal not vaccinated for rabies is suspected of having rabies, appropriate methods will be utilized to make a diagnosis including quarantining the animal for the appropriate period of time.

Bovine Viral Diarrhea persistent infection (BVD-PI) Testing

All cattle, alpacas, and llamas must be negative to an approved test appropriate to detect Bovine Viral Diarrhea persistent infection (BVD-PI). This test must be reported on the required certificate of veterinary inspection (CVI). The issuing veterinarian is responsible for verifying the validity of the test, the identification of the animal and recording the test date on the CVI. If a previous test is not verifiable the test must be repeated.

It is recommended that all cattle, alpacas, and llamas be vaccinated for Bovine Respiratory Disease Complex (shipping fever). Owner(s) should discuss with their veterinarian the advantages of having their animals vaccinated for the Bovine Respiratory Disease Complex.

Cattle Testing

Currently acceptable BVD-PI tests for cattle less than 61 days old:

- Skin notch Antigen Capture ELISA (ACE) or Immunohistochemistry (IHC)
- Whole blood virus isolation
- Whole blood PCR

Currently acceptable BVD-PI tests for cattle 61 days of age and older:

- Skin notch Antigen Capture ELISA (ACE) or Immunohistochemistry (IHC)
- Serum or milk Antigen Capture ELISA (ACE)
- Whole blood virus isolation
- Whole blood, serum or plasma PCR

Note: The NYS Veterinary Diagnostic Laboratory of Cornell University can conduct PCR testing on pools of up to 10 cattle.

Llama, Alpaca Testing:

Currently acceptable BVD tests:

- PCR
- Whole blood virus isolation

Note: The NYS Veterinary Diagnostic Laboratory of Cornell University can pool llama, etc. samples for PCR testing as follows:

Animals less than 61 days of age can be tested in pools of 2 animals, whole blood only. Animals 61 days of age and older can be tested in pools of 5 animals using whole blood, serum or plasma.

Kevin Mitchell reviewed the above information with Dr. Paul Tallamy February 28, 2012.

4-H RABBIT, CAVY, & SMALL ANIMAL PROJECTS

Department Chairperson: Donna Meisinger (973) 383-6783

RULES:

1. All animals will be clearly marked and will be given a coop number at rabbit check in. Tattoo your animal if possible.
2. All animals must be inspected by 4-H leader for vermin and must be disease free. Diseased and sick animals must be removed immediately; 4-H leader's decision is final.
3. Showmanship and Skill-A-Thon must be completed by **April 26th** in order to receive fair passes and fair privileges
4. Entrants must be 4-H member of an active 4-H rabbit, cavy or small animal club of Sussex County and have met all members in good standing requirements to be eligible to show. 4-H clubs and members must be active as of January 1st; after this date club members will have limited participation. Entry forms & project books must be submitted to the head club leader by June 1st.
5. Animal must be born and owned by **May 9th** of current year for rabbits and **June 1st** for cavy and small animals. All animals must be recorded in the rabbit, cavy and small animal project book.
6. **Awards:** all entries will be awarded Excellent, Very Good, or Good
7. Only 10 project animals allowed to be exhibited per 4-H member.
8. All members, leaders, and parents will follow 4-H Exhibitor Behavior Code. Anyone not abiding by the Behavior Code will be removed from the fairgrounds and must turn in their passes to fair security.
9. There will be no changes for senior aged animals to the registration form unless it is to substitute a ***project animal*** of the same breed, sex and age. Leaders should be consulted if there is uncertainty in type, sex, color, etc., before the entry form is signed. Leaders will not be held responsible for errors on entry forms. ***If you scratch a rabbit at registration, you must sign the entry form to show that you understand that this project animal cannot be shown.*** If you are uncertain as to whether to scratch a rabbit or not, wait until Sunday. ***Project animals registered as wrong gender and/or breed must show as registered on entry form and will be disqualified by the judge.***

No Premiums Will Be Awarded For Disqualified Animals

10. All 4-H members will abide by the rules stipulated in the *Rabbit and Small Animal Projects Members Exhibitor Guide*.

RABBITS: have the following Section breeds:

AME: American	ANE: English Angora	ANF: French Angora	ANG: Giant Angora
ANS: Satin Angora	BEL: Belgian Hare	BEV: Beveren	BRP: Britannia Petite
CAL: Californian	CGI: Giant Chinchilla	CHA: American Chinchilla	CHD: Champagne D'argent
CHG: Checkered Giant	CHS: Chinchilla Standard	CIN: Cinnamon	CRD: Creme D'argent
DHT: Dwarf Hotot	DUT: Dutch	ENS: English Spot	FLG: Felmish Giant
FLW: Florida White	HAR: Harlequin	HAV: Havana	HIM: Himalayan
HOT: Hotot	JER: Jersey Wooly	LHD: Lion Head	LIL: Lilac
LOE: English Lop	LOF: French Lop	LOH: Holland Lop	LOM: Mini Lop
LOV: Velveteen Lop	LOZ: Fuzzy Lop	MIX: Mixed Breed	MSA: Mini Satin
NET: Netherland Dwarf	NEW: New Zealand	PAL: Palomino	POL: Polish
REM: Mini Rex	REX: Rex	RHI: Rhinelander	SAB: Sable
SAT: Satin	SIF: Silver Fox	SIL: Silver	SIM: Silver Marten
TAN: Tan	THR: Thrianta	UNB: New Breeds Not Recognized	

RABBIT, CAVY, & SMALL ANIMAL (Continued)

Class Number with description

1. Senior Buck	2. Senior Doe
5. Junior Buck	6. Junior Doe

Juniors are rabbits that will be 6 months of age or younger on the day of show

CAVY (Guinea Pigs) have the following section breeds:

VAB: Abyssinian	VAM: American	VAN: American Satin
VAS: Abyssinian Satin	VCO: Coronet	VPE: Peruvian
VPS: Peruvian Satin	VSI: Silkie	VSP: Skinny Pig
VSS: Silkie Satin	VTE: Teddy	VTS: Teddy Satin
VTX: Texel	VWC: White Crested	VMX: Mixed

Class Number with description

1. Senior Boar	2. Senior Sow	3. Junior Boar	4. Junior Sow
----------------	---------------	----------------	---------------

Junior cavy are 6 months of age or younger on the day of show

SECTION WSA - SMALL ANIMAL

Class Number with description

1. Mice	2. Gerbils	3. Hamsters	4. Chinchillas
5. Sugar Glider	6. Hedgehog	7. Rats	

Each will receive their own class number

SECTION WSP – SPECIAL CLASSES

Class Number with description

1. Doe and Litter – Rabbit show only, 4 to 6 weeks old (June 20-July 4)	2. Cavy Senior Citizen Boar – 4 years and older
3. Cavy Senior Citizen Sow – 4 years and older	4. Rabbit Senior Citizen Buck – 5 years and older
5. Rabbit Senior Citizen Doe – 5 years and older	6. Costume



SECTION WSH – SHOWMANSHIP/SKILL-A-THON/ PRESENTATION CLASSES

Class Number with description

1. Showmanship Cloverbud—grades K thru 3rd	2. Showmanship Beginner—first and second year in 4-H
3. Showmanship Intermediate—third and fourth year in 4-H	4. Showmanship Senior—fifth and sixth year in 4-H
5. Showmanship Advanced—seventh thru ninth year in 4-H	6. Skill-A-Thon Cloverbud—grades K thru 3rd
7. Skill-A-Thon Beginner—first and second year in 4-H	8. Skill-A-Thon Intermediate—third and fourth year in 4-H
9. Skill-A-Thon Senior—fifth and sixth year in 4-H	10. Skill-A-Thon Advanced — seventh thru ninth year in 4-H

Note: 4-H Member Entry Forms and record books for all rabbits, cavy and small animals must be submitted to club leaders by June 1st

All exhibitors must abide by the Health Requirements in the Livestock Exhibitor & General Health Information section of the The New Jersey State Fair®/Sussex County Farm & Horse Show website, www.njstatefair.org. Water at the Fairgrounds may contain chlorine to combat harmful bacteria.

If barn space is available all 4-H animals must remain from their show date until the end of the Fair or forfeit the premiums paid by the New Jersey State Fair®/Sussex County Farm and Horse Show.

4-H POULTRY PROJECTS

Department Chairperson: Mike & Tanya Sullivan (973)827-1955

RULES:

1. All birds must be inspected by 4-H leader for vermin and must be disease free. *Any bird showing signs of contagious disease & or parasites, will be removed from the show hall.* 4-H leader's decision will be final.
2. Entrants must be 4-H member of an active 4-H poultry club and have met all members in good standing requirements to be eligible to show. 4-H club must be active as of February 1st; after this date club members will have limited participation. 4-H Member Entry forms must be submitted to department chairperson by June 18th.
3. Animal must be a bonafide 4-H project by May 1st of current year and be recorded in a poultry project book.
4. Project books must be up to date for the whole year to enter into the fair and receive fair tickets. *Project books must be turned in to department chairperson by June 18th.*
5. Showmanship must be completed in order to receive premiums
6. *Awards:* all entries will be awarded Excellent, Very Good, or Good
7. All members, leaders, and parents will follow 4-H Exhibitor Behavior Code. Anyone not abiding by the behavior code will be removed from the fairgrounds and must turn in their passes to fair security.
8. Food and water will be available at the show hall. ***It is the responsibility of the owner to supply approved type containers, 2 per cage, one for water and one for feed; each cage must have 2 containers.*** Birds must be checked on a daily basis and cleaned as necessary. Acceptable types of containers: are 1 liter bottle with an opening cut 3" from the bottom and 8" of string or ribbon for tying; 2 liter bottle with an opening cut 4"-5" from the bottom and 8"-10" of string or ribbon for tying; and 1 gallon jug with an opening cut 6"-7" from the bottom and a 10" -12" string or ribbon for tying. Other acceptable types of containers are 1-pound delicatessen salad containers, weighted pet dishes – maximum 6" diameter and large hook-on plastic cage feeders. *No paper cups or tin cans or deep, narrow containers will be allowed.* All feed/water containers must be secured to cage sides or front corners to prevent tipping over. Even for small bantams, hook-on feeders should be on at least the second bar from the bottom to prevent soiling.
9. We are pleased to *freshen* feed and water in the morning, since most exhibitors cannot be present at that time. *However*, each bird exhibited must be checked, either by the exhibitor or his representative daily and cleaning and feeding done as necessary. Supplies are available in the show hall. *Waterfowl especially* require daily feeding and cleaning. The water container should not be open enough to encourage bathing, as the bedding becomes too wet for good sanitation
10. The SCPFA will guard against accident, loss or damage, *but* will not be liable should any occur.
11. **New Jersey State Law Requirements:** New Jersey Law requires pullorum testing in order to show or sell birds. ***Be prepared to have your birds checked for pullorum certificates. Waterfowl are exempt.*** All county fairs are under the auspices of New Jersey Department of Agriculture. State inspectors will be present on the fairgrounds.
12. All 4-H Members who intend to exhibit poultry projects must have given a county level 4-H Public Presentation.
13. All poultry exhibitors must stay in barn 6 until 5 pm on the last Sunday of the fair or premiums will be forfeited.

4-H POULTRY PROJECTS (Continued)

Simplify your coop-in

Attach a copy of your certificate to the entry form.

LARGE FOWL: SECTION A

Classes with description:

1. Large Fowl – Cock
2. Large Fowl – Hen
3. Large Fowl – Cockerel
4. Large Fowl – Pullet

BANTAM: SECTION B

Classes with description:

1. Bantam – Cock
2. Bantam – Hen
3. Bantam – Cockerel
4. Bantam – Pullet

SECTION SHO – SHOWMANSHIP

Classes with description:

1. Cloverbud – grades K thru 3 rd
2. Junior – grades 4 th thru 8 th
3. Senior – grades 9 th thru 13 th

WATERFOWL: SECTION C

Classes with description:

1. Waterfowl – Cock
2. Waterfowl – Hen
3. Waterfowl – Cockerel
4. Waterfowl – Pullet

PIGEON: SECTION D

Classes with description:

1. Pigeon – Cock
2. Pigeon – Hen

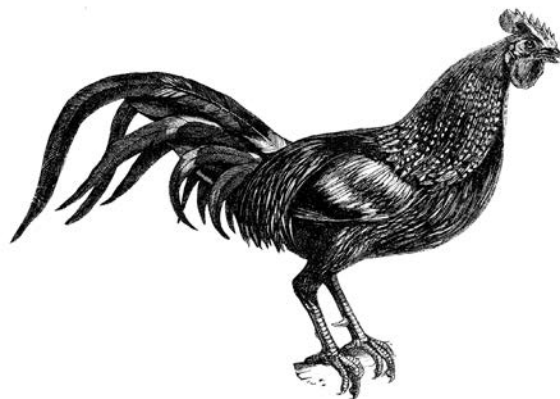
SECTION FUN – FUN CLASSES

Classes with description:

1. Costume

All exhibitors must abide by the Health Requirements in the Livestock Exhibitor & General Health Information section of the The New Jersey State Fair®/Sussex County Farm & Horse Show website, www.njstatefair.org. Water at the Fairgrounds may contain chlorine to combat harmful bacteria.

If barn space is available all 4-H animals must remain from their show date until the end of the fair or forfeit the premiums paid by the New Jersey State Fair®/Sussex County Farm and Horse Show.



4H MARKET ANIMAL PROJECT

Lamb, Steer, Hog, Goat

1. 4-H members must comply with General Health Fair Exhibitor Rules on the New Jersey State Fair/ Sussex County Farm & Horse Show website, as well as the rules of the market project species.
2. Ownership of animals is required by a specific date: January 1st for market steers, and May 1st for market lambs, goats and hogs. Authorized adult club leaders must determine whether a project animal can be replaced due to sickness or injury. After July 1st a 4-H member can only replace a designated market lamb, hog, goat or steer with another animal that they have also raised at their farm.
3. Birth dates of each market project are as follows:
 - Market lambs must be born January 1st or later of the current year.
 - Market goats must be born January 1st or later of the current year .
 - Market hogs must be born February 1st or later of the current year.
 - Market steers must be born after January 1st of the previous year and not be more than 20 months old or showing any permanent incisor teeth at the time of sale.
4. Market Project Finished Weight Requirements:
 - Market lambs must be a minimum of 75 lbs and 150 lbs maximum pay weight.
 - Market goats must be between 50 lbs and 110 lbs.
 - Market hogs must be between 200 lbs and 275 lbs.
 - Market steers must be between 900 lbs and 1550 lbs.
5. A Certificate of Veterinary Inspection (CVI) is required for every animal. No animal will be unloaded before a designated fair official does a health evaluation on the animal. CVI must include proof of rabies vaccine/BVD test (as required), by a licensed veterinarian.
6. A 4-H member may raise more than one market project species and may also raise more than one animal (lamb, steer, goat or hog) in each species. The member may enter all the animals for judging (two in one species or different species). **If a member does raise more than one species he or she may only enter one of each species in the Market Animal Sale (MAS) and is limited to two animals overall in the MAS.** The only exception to this rule is when the 4-H member has achieved both Grand and Reserve Champion in a single species. If this should happen, both the Grand and Reserve must be entered into the MAS.
7. *No* horned animals will be allowed in a 4-H show, barn and/or exhibit.
8. All market animals must be weighed in between 8:00 and 10:00 am on the first Monday of the fair at times to be announced by the division chairpersons. *All animals must be prepared to be weighed by 8:00 am.* Failure to do so will forfeit the right to show.
9. The following items must be completed and submitted by the designated deadline:
 - a. 4-H members must give a county level public presentation in order to qualify to sell their market animal in the sale
 - b. Yellow market registration *forms* with photos of animals showing their tag/tattoo #'s, must be submitted at the May meeting of club species.
 - c. Project book completed through May submitted at the June meeting of club species to club leader to be reviewed and signed.
 - d. SCFHS entry form must be completed and handed in to species club leader at the June species club meeting.
 - e. MAS green booster form must be completed and handed in to species club leader or designated parent at June club meeting. *All booster forms and money must be submitted to the MAS Treasurer by July 1st.*

Failure to comply with any of the above requirements will forfeit a member's eligibility to participate in the MAS.

Market Animal Sale Project-continued

10. Only blue ribbon animals may be sold, and those may be sold at the option of the exhibitor, except that Grand and Reserve Champion animals of each species **must** be offered for sale. If a 4-H member chooses to withdraw his or her animal from the sale, they must inform their 4-H club leader and the chair of the Market Animal Sale Committee as soon as possible prior to the beginning of the sale.
11. When an animal sells in the 4-H Market Animal Sale, the sale is final. 4-H members or their parents, relatives or friends may not interfere with the transfer of the animal to the buyer or hauler. Under no circumstances will a 4-H member be allowed to keep his or her animal and also receive payment for the sale of the animal.
12. Dress for market sale show will be club designated show shirt. Dress for the Social and Auction will be clean blue jeans, and MAS T-shirt. No baseball hats or sandals will be allowed.
13. All members must meet in the Ag Arena show ring at 5:00 pm for group photo.
14. Any 4-H member who is not available to present his or her animal for sale at the appropriate time will forfeit the privilege of selling the animal. Extraordinary 4-H circumstances will be considered at the discretion of the leader.
15. 4-H members are responsible for picking up their meat for delivery to their buyer or charity. The meat is delivered by refrigerated truck on a specified date that is pre-arranged. If they cannot come, they must:
 - Make arrangements in advance for someone else to pick up and deliver their meat and;
 - Contact their club leader in advance to inform them that they will not be in attendance, and;
 - Contact buyer(s) and/or charities prior to the day of delivery.
16. ***All meat must be delivered to your buyer or the buyer selected charity on day of meat delivery, or agreed upon date by buyer.*** Failure to meet these responsibilities will result in a 10% penalty, deducted from his or her proceeds.
17. The 4-H member will receive no less than 90% of the sale price. The percentage the 4-H member receives will be for the sale of their market animal determined by the MAS committee.
18. The Buyer Social is offered to provide a meal and allow socialization for the buyers as a *thank you*, and as encouragement to purchase an animal. 4-H members who are selling animals may be present (in appropriate dress) for a short time, beginning at 5:30 to mingle with the buyers. All 4-H members shall be present for the opening ceremony at the beginning of the sale.
19. *Resale* of any market animals will be scheduled at the end of the sale. Only one animal of each species will be auctioned at the end of the sale. Funds generated by this resale are donated to Sussex County 4-H affiliated organizations such as the 4-H Foundation.
20. A parent or guardian of any 4-H members intending to participate in the MAS must attend a mandatory parent meeting in the month of April. There will be ***no exceptions***, unless otherwise excused by a club's leader. If a parent or guardian does not attend this meeting, the 4-H member will not be permitted to participate in the MAS.
21. MAS reserves the right to make exceptions to any of the above rules under extenuating circumstances. 4-H club leaders of the sheep, steer, hog and goat project clubs must report any such situations occurring with individual members which cause conflict in conforming to the above regulations to the 4-H Market Animal Show and Sale Planning Committee which will take appropriate action.

Reviewed and amended MAS Committee Fall 2012

4-H BEEF BREEDING & MARKET STEER PROJECTS

Department Chairperson: JD Zitone (973) 600-2306

The following policy is to govern 4-H member participation in the Sussex County 4-H beef project shows at the NJSF/SCFHS®

SECTION A: Registration and Entry Form Requirements

1. Each 4-H member is responsible for obtaining an NJSF®/SCFHS 4-H Livestock Entry form as soon as they are available from the 4-H office or from the club leader.
2. Completed 4-H member entry forms must be reviewed and signed by the club leader.
3. Each project animal must be recorded in the 4-H member's record book. The record book must be completed through the month of May, reviewed and signed by the club leader in June and delivered to the 4-H Office with the 4-H member entry form by July 1st by the club leader or by an adult designated by the club leader.
4. 4-H member entry forms that are turned in after July 1st will be identified as received late. 4-H animal projects that are entered late will forfeit all premiums, placings and the right to sell their animal at the Market Animal Sale.



SECTION B: Animal Health Requirements

1. A Certificate of Veterinary Inspection (CVI) is required for each 4-H beef project entered. The CVI must be shown to a club leader, fair livestock supervisor or veterinarian when the animal is unloaded at the fair. A CVI must be kept in the barn while the animal is at the fair.
 2. In addition to the CVI requirements, if a 4-H club leader becomes aware of health conditions that could affect a 4-H member's animal's participation in the show; they should inform the fair livestock supervisor and/or veterinarian at the fair.
 3. When the health of a 4-H member's project animal is in question a veterinarian will examine the animal and determine if the project animal should be removed from the fairgrounds.
4. No horned animals will be allowed in a 4-H show, barn and/or exhibit.
 5. All exhibitors must abide by the Health Requirements in the Livestock Exhibitor & General Health Information section of the The NJSF®/SCFHS website, <http://njstatefair.org/>.

SECTION C: 4-H Member Requirements

1. 4-H members must have completed the 4th grade and have met all Member in Good Standing requirements to be eligible to show and receive premiums. All members must participate in their project showmanship class to receive premiums or sell a market animal in the 4-H Market Animal Sale.
2. A 4-H Cloverbud member can participate only in breeding and showmanship classes if the project leadership offers such a class. Cloverbud members must have completed the 1st—3rd grade. No cash premiums are awarded, only participation ribbons and trophies



4-H BEEF BREEDING & MARKET STEER PROJECTS (Continued).

3. Please note that the purpose of the 4-H Cloverbud program is to introduce Cloverbud members to a variety of 4-H projects, which are available to them upon reaching 4th grade. Participation in the 4-H Cloverbud program is *not* an opportunity to gain experience that can be *credited towards a 4-Hers participation in the standard 4-H program upon reaching the 4th grade.*
4. All 4-H members who intend to sell a market steer in the 4-H Market Animal Sale must have given a county level 4-H public presentation.
5. A person must have joined the project club before January 1st of current year in order to show. Members who miss the January 1st deadline, will be unable to sell a market animal at the 4-H Market Animal Sale.

SECTION BRE: 4-H Beef Breeding Project Requirements

1. The 4-H member or the immediate family must have owned 4-H beef breeding projects by May 1st. An exception to this would be animals falling under the loaner agreement attested to by both parties of the agreement. A loaner agreement must be on file at the 4-H office by May 1st.
2. Original registration papers must be presented to the club leader/show superintendent at the time of the show.
3. The 4-H leader/show superintendent has the right to combine classes within the breed or among several breeds as entries may dictate.
4. The 4-H member must have bred calves shown in a cow-calf class.

SECTION MAR: Market Steer Project Requirements

1. Market steers must have been born after January 1st of previous year, and not be more than 20 months old or showing any permanent incisor teeth at the time of the sale.
2. The member must have owned market steers by January 1st of the year.
3. Market animals must be ready to be weighed in no later than 10:00 am on Monday of the fair at times to be announced by the division chairpersons. Failure to do so will forfeit the right to show.
4. Steer projects must weigh at least 900 lbs when weighed in at the fair in order to qualify for the Market Animal Sale. A 4-H member may still show his/her market steer even though it may not make weight.
5. Market steers will have a maximum finished weight of 1550 lbs. The buyer will only pay the bid price for up to 1550 lbs.
6. A market steer must be judged a blue ribbon (Excellent) to qualify for the sale.
7. First & Second place animals from each weight class will make up the championship class. An individual 4-H member may show more than one animal in the championship class.
8. The Grand & Reserve Champion animals in the beef department market show must be sold. All other animals that receive a *blue* ribbon and qualify for the sale may be sold at the 4-Hers discretion. Only one 4-H market steer project can be sold in the Market Animal Sale, although a member can raise and show more than one project animal.

Exception noted: Rule #6 of 4-H Market Animal Project

4-H BEEF BREEDING & MARKET STEER PROJECTS (Continued)

SECTION CODES

SECTION MAR – Market

Classes with description:

1. Market: classes will be determined after weigh-ins—all entries enter into Class A

SECTION BRE – Breeding animal classes

Classes with description:

1. Jr. Heifer Calf—born on/after 1/1/2015	2. Sr. Heifer Calf—born 9/1/2014—12/31/2014
3. Summer Yearling—born 5/1/2014—8/31/2014	4. Spring Yearling—born 1/1/2014 —4/30/2014
5. Fall Yearling—born 9/1/2013—12/ 31/ 2013	6. 2 year old not yet fresh—born 9/1/2012—8/31/2013
7. Cow-calf	

SECTION SHO - Showmanship:

Classes with description:

1. Cloverbuds: 1 st — 3 rd grade	2. Beginner : 4 th —5 th grades
3. Intermediate: 6 th —9 th grades	4. Advanced: 10 th —13 th grades

AWARDS

1. Danish placing: Excellent, Very Good, and Good
2. Champion and Reserve Champion

No cash premiums will be given to market animals.

All exhibitors must abide by the Health Requirements in the Livestock Exhibitor & General Health Information section of the The New Jersey State Fair®/Sussex County Farm & Horse Show website, www.njstatefair.org. Water at the Fairgrounds may contain chlorine to combat harmful bacteria.

If barn space is available, all 4-H animals must remain from their show date until the end of the fair or forfeit the premiums paid by the New Jersey State Fair ®/Sussex County Farm and Horse Show.

Department 31

4-H DAIRY CATTLE PROJECTS

Department Chairperson: Marissa Cramer, (973) 670-8438 and Terry Kuperus (973) 875-5894

The following policy to govern 4-H member participation in the Sussex County 4-H dairy cattle project shows at the NJSF®/SCFHS

SECTION A: Registration and Entry Form Requirements

1. Each 4-H member is responsible for obtaining an NJSF®/SCFHS 4-H livestock entry form when they are available from the 4-H Office or from the club leader.
2. Completed 4-H member entry forms must be reviewed and signed by the club leader and returned to the 4-H office by July 1st. Each project animal must be recorded in the 4-H member's record book. The record book must be completed through the month of May, reviewed and signed by the club leader in June and delivered to the 4-H Office with the 4-H member entry form by July 1st by the club leader or by an adult designated by the club leader.
3. Entry forms that are turned in after **July 1st** will be identified as *received late* 4-H animal projects that are entered late will forfeit all Danish placings and cash premiums awarded.

SECTION B: Animal Health Requirements

1. A Certificate of Veterinary Inspection (CVI) is required for each 4-H beef project entered. The CVI must be shown to a club leader, fair livestock supervisor or veterinarian when the animal is unloaded at the fair. A CVI must be kept in the barn while the animal is at the fair.
2. In addition to the CVI requirements, if a 4-H club leader becomes aware of health conditions that could affect a 4-H member's animal's participation in the show; they should inform the fair livestock supervisor and/or veterinarian at the Fair.
3. When the health of a 4-H member's project animal is in question a veterinarian will examine the animal and determine if the project animal should be removed from the fairgrounds.
4. Every animal must have proof of a shipping fever shot. This must be stated on the health form, which will be checked with the registration papers.
5. No horned animals will be allowed in a 4-H show, barn and/or exhibit.
6. All exhibitors must abide by the Health Requirements in the Livestock Exhibitor & General Health Information section of the The New Jersey State Fair®/Sussex County Farm & Horse Show website, <http://njstatefair.org/>.

SECTION C: 4-H Member Requirements

1. All exhibitors must be active 4-H members in grades 4th thru 13th and have met all members in good standing requirements to be eligible to show and receive premiums. All members must participate in their project showmanship class to receive premiums.
2. 70% Attendance, Dairy Judging and Public Presentation requirements must be met to be eligible to show and/or receive premiums
3. Growing and/or production records must accompany all animal entries on each animal entered. Records must be completed as of May 1st and submitted with the 4-H member entry form.
4. Exhibitors shall be neatly dressed when exhibiting and wear clean white clothing. (*No farm names on clothing*) and wear sturdy, safe shoes. (*No open toe shoes*); *no midriff shirts or short shorts*.
5. A person must have joined the 4-H project club before January 1st of current year in order to show.

4-H DAIRY CATTLE PROJECTS (*Continued*)

SECTION D: 4-H Dairy Cattle Requirements

1. All animals must be born, leased or purchased before May 1st of current year. All lease agreements must be on file at the 4-H office by May 1st.
2. All exhibitors must have all animals not milking on the grounds between 12:00 p.m. and 9:00 p.m. on Monday of fairweek. Milking animals may be brought to the fairgrounds and removed on the day they are to be shown.
3. It is required that all non-milking animals stay from Monday until Friday. It is recommended that non-milking animals stay until the closing Sunday if space is available. Entrants must state on the entry form the exact date their animals will leave the grounds.
4. Awards: Excellent, Very Good, and Good; with 1st – 8th in special classes.
5. All animals should be milked in the milking parlor

CLASSES:

SECTION SHO: Showmanship classes

Classes with description:

1. Cloverbud – 1st grade	2. Cloverbud – 2nd grade
3. Cloverbud – 3rd grade	8. Novice-4th -5th grades
9. Intermediate- 6th – 9th grades	10. Experienced- 10th – 13th grades

THESE SECTIONS HAVE THE FOLLOWING CLASSES:

AYR: Ayrshire	BRO: Brown Swiss	GUE: Guernsey
HOL: Holstein	JER: Jersey	

CLASSES:

Junior Females

1. Spring heifer calf—born 3/1/2015 thru 5/1/2015	2. Winter heifer calf—born 12/1/2014 thru 2/28/2015
3. Fall heifer calf - born 9/1/2014 thru 11/30/2014	4. Summer yearling heifer — born 6/1/2014 thru 8/31/2014
5. Spring yearling heifer—born 3/1/2014 thru 5/31/2014	6. Winter yearling heifer — born 12/1/2013 thru 2/29/2014
7. Fall yearling heifer—born 9/1/2013 thru 11/30/2013 milking fall yearlings will compete in the Junior 2 year old class	8. Junior and Reserve Junior Champion

4-H DAIRY CATTLE PROJECTS (*Continued*)

Senior Females

10. Two year old not yet fresh	11. Junior dry cow—born 9/1/2010 thru 8/31/2013 (2 thru 4 year olds)
12. Senior dry cow—born before 9/1/2010 (5 year olds and older)	13. Junior 2 year old - born 3/1/2013 thru 8/31/2013
14. Senior 2 year old—born 9/1/2012 thru 2/29/2013	15. Junior 3 year old—born 3/1/2012 thru 8/31/2012
16. Senior 3 year old—born 9/1/2011 thru 2/29/2012	
18. Four year old cow - born 9/1/2010 thru 8/31/2011	19. Five year old cow—born 9/1/2009 thru 8/31/2010
20. Aged Cow—born before 9/1/2009	21. Senior and Reserve Senior Champion
22. Grand and Reserve Grand Champion	

Special award within each milking class for the designated best udder—to be determined by judge

Note: Only members receiving red or blue ribbons will be eligible for championships. Classes may be combined if not enough animals are entered to fill a class. There must be at least 3 entries to be eligible for a trophy.

Special Classes:

23. Produce of Dam—two animals; one or more owners; same dam	24. Dam and Daughter
25. Best Animal Bred by Exhibitor	

MIL – MILKING CONTEST

Classes:

1. Cloverbud: 1 st —3 rd grades	2. Junior: 4 th —5 th grades
3. Intermediate: 6 th —9 th grades	4. Senior: 10 th —13 th grades

All exhibitors must abide by the Health Requirements in the Livestock Exhibitor and General Health Information section of the New Jersey State Fair®/Sussex County Farm and Horse Show website, <http://www.njstatefair.org/>. Water at the Fairgrounds may contain chlorine to combat harmful bacteria.

If barn space is available, all 4-H animals must remain from their show date until the end of the fair or forfeit the premiums paid by the New Jersey State Fair®/Sussex County Farm and Horse Show.

Department 32

4-H SHEEP & MARKET LAMB PROJECT

Department Chairperson: Irene Zeberl and Rachel Zeberl (973) 293-3064 or (862) 668-3541

The following policy to govern 4-H member participation in the Sussex County 4-H sheep project shows at the NJSF®/SCFHS.

SECTION A: Registration and Entry Form Requirements

1. Each 4-H member is responsible for obtaining an NJSF®/SCFHS 4-H livestock entry form from the 4-H office, the Sussex 4-H Website (www.sussex4h.org) or from the club leader. Club leaders reserve the right to restrict the number of breed show entries based on the availability of barn space. Only animals entered on entry sheets will be admitted onto the fairgrounds. All entries listed on fair entry form must be included in 4-H member's project record book.
2. Completed 4-H member entry forms must be reviewed and signed by the club leader. Changes to entries must be reported to the club's leader after Veterinarian check-in when sheep projects arrive at the fair.
3. Each project animal must be recorded in the 4-H member's record book. The record book must be completed through the month of May, reviewed and signed by the club leader in June and delivered to the 4-H Office with the 4-H member entry form by July 1st by the club leader or by an adult designated by the club leader.
4. Project record books and 4-H member entry forms that are turned in after **July 1st** will be identified as **received late**. 4-H animal projects that are entered late will forfeit all premiums, placings and the right to sell their animal at the Market Animal Sale.

SECTION B: Animal Health Requirements

1. A Certificate of Veterinary Inspection (CVI) is required for each 4-H sheep project entered prior to the start of the fair, and within 30 days of the last day of the fair. The CVI must be shown to a club leader, fair livestock supervisor and veterinarian when the animal is unloaded at the fair. A CVI must be kept in the barn while the animal is at the fair. *Animal ID numbers listed on the CVI paperwork must match the animal ID numbers on the 4-H member's entry form, and represent the animals present on the fairgrounds.*
2. In addition to the CVI requirements, if a 4-H club leader becomes aware of health conditions that could affect a 4-H member's animal's participation in the show; they should inform the fair livestock supervisor and/or veterinarian at the fair. During the 4-H project year if the 4-H club leader becomes aware of health conditions that could prevent an animal's participation in the show, the 4-H club leader should provide guidance and/or educational activities that will help the 4-H member correct these health conditions.
3. When the health of a 4-H member's project animal is in question a veterinarian will examine the animal and determine if the project animal should be removed from the fairgrounds.
4. No horned animals or aged rams (greater than 2 years old) will be allowed in a 4-H show, barn and/or exhibit.
5. Proof of sheep rabies vaccine administered by a licensed veterinarian is required. Vaccine must be given at least 21 days prior to the start of the fair.
6. All exhibitors must abide by the Health Requirements in the Livestock Exhibitor & General Health Information section of the The New Jersey State Fair®/Sussex County Farm & Horse Show website, <http://www.njstatefair.org/>.

4-H SHEEP & MARKET LAMB PROJECT (*continued*)

SECTION C: 4-H Member Requirements

1. 4-H members must have completed the 4th grade and have met all members in good standing requirements to be eligible to show and receive premiums. All members must participate in their project showmanship class to receive premiums or sell a market animal in the 4-H Market Animal Sale.
 - a. A 4-H Cloverbud member may *only* participate in showmanship and costume classes if the project leadership offers such a class. Cloverbud members must have completed the 1st – 3rd grade. No cash premiums are awarded, only participation ribbons and trophies. Cloverbud members are not permitted to bring their own sheep to the fair.
 - b. Please note that the purpose of the 4-H Cloverbud program is to introduce Cloverbud members to a variety of 4-H projects, which are available to them upon reaching 4th grade. Participation in the 4-H Cloverbud program is *not* an opportunity to gain experience that *can be credited towards a 4-Hers participation in the standard 4-H program upon reaching the 4th grade*.
2. All 4-H members who intend to sell a market lamb in the 4-H Market Animal Sale must have given a county level 4-H public presentation.
3. A person must have joined the project club before January 1st of current year in order to show. Members who miss the January 1st deadline may show in the 4-H breeding and/or Market animal shows as a *learning experience* and receive *participation ribbons only*, but *will not* be awarded cash premiums and will be unable to sell a market animal at the 4-H Market Animal Sale.
4. All club members are required to raise and show at least one breeding sheep project in order to sell a market lamb.
5. The dress code for showing is clean jeans, a belt, a white collared shirt (no t-shirts); socks, and sturdy, safe shoes (no open toed shoes). Members must remain in show attire until conclusion of show and after a group photograph has been taken.

SECTION D: 4-H Breeding Sheep Project Requirements

1. 4-H sheep breeding projects must have been owned and present at the home of the 4-H member or the immediate family by May 1st. An exception to this would be animals falling under the loaner agreement attested to by both parties of the agreement. A loaner agreement must be on file at the 4-H office by May 1st.
2. All 4-H breeding projects must be on display no later than 9:30 am Wednesday of the fair, at the AG President's discretion. 4-H members that are participating in the 4-H Market Animal Show may bring their sheep breeding projects before 8:00 am on Monday of the fair if space is available.
3. Members have the option of showing breeding sheep at halter.
4. No yearling teeth can be evident in lambs. Yearlings (1-2 years old) may not have more than four permanent teeth.
5. **No** sheep may leave the display barn until the conclusion of the fair.
6. The 4-H member will fit all project animals. First year members may receive assistance from other 4-H'ers and club leaders. No 4-H'er may do the work of fitting a sheep for another 4-H'er. Parents are requested to observe this rule as well.
7. All members are responsible to know their classes and be ready when called into the show ring.
8. At the Judge's discretion, additional 4-H members are permitted in the show ring to assist and help set-up the animal, during market and breed show classes.
9. All sheep must be fed by 8:00 am and pens must be cleaned before 10:00 am daily or a \$5.00 fee per pen per day will be deducted from the premiums earned by the offending member(s).
10. Only first place animals which have a score of Blue/Excellent ribbon will compete for champion in the sheep breed show classes. Additionally all breed Champions (and Reserve Champions requested by judges) in each division will compete for overall Grand Champion and Reserve Champion Ram and Ewe.

4-H SHEEP & MARKET LAMB PROJECT *(continued)*

SECTION E: Market lamb Project Requirements

1. Market lambs must be born January 1st or later of the current year.
2. Market lambs must be owned and present at the home of the member by May 1st of current year.
3. Market projects must have a finished requirement of 75 lbs when weighed in at the fair and a maximum of 150 lbs. pay weight in order to qualify for the Market Animal Sale. If market lambs weigh less than 75 lbs. at official weigh-in, the 4-H member has the option of showing the market lamb(s) in their class. However, the entry/entries *may not qualify* for Champion or Reserve Champion titles, and *may not be sold* in the 4-H Market Animal Sale.
4. To be eligible to show and sell a market lamb, the 4-H'er must raise and show at least one breeding animal in the 4-H sheep breed show.
5. If a situation occurs where a member sells a market lamb but fails to show the breeding project, that member will, forfeit the proceeds of the market lamb sale amount to the MAS Committee.
6. A market lamb must be judged a blue ribbon (Excellent) to qualify for the sale; in addition to having met the 75 pound requirement.
7. First & Second Place animals from each weight class will make up the championship class. An individual 4-H member may show more than one animal in the championship class.
8. The champion & reserve champion animals in the market lamb show must be sold. All other animals that receive a **blue** ribbon and qualify for the sale may be sold at the 4-Hers discretion. Only one 4H market lamb project can be sold in the Market Animal Sale, although a member can raise and show more than one project animal. A maximum of two lambs may be brought and shown, due to limited barn space at the fair. **If a 4-H member receives both Grand & Reserve Champion market lamb titles, both lambs must be sold by the 4-H member.**
9. All wethers must be castrated with a knife or elastrator 60 days prior to show.
10. Market lambs *may not* be shown at halter.
11. Market lambs must be weighed in no later than 10:00 am on Monday of the fair *at times to be announced by the division chairpersons*. Only the market lambs arriving on Monday morning before 8:00 am will be weighed in at 1:00 pm. Failure to do so will forfeit the right to show.
12. Market lambs must be shorn within 30 days of the show and/or fleece may not be longer than 1/2 inch.
13. All Market lambs that a 4-H member is considering bringing to the fair, must be registered on the entry forms. All animals will be on one yellow form, including photos and tag or tattoo identification numbers.

SECTION: MAR -MARKET LAMB

Classes will be adjusted into 3 or 4 classes at the discretion of the leader and/or judge depending on number of animals at weigh-in. Market Lamb—all entries enter into **Class A**.

All rules are subject to change due to extenuating circumstances.

4-H SHEEP & MARKET LAMB PROJECT (*continued*)

BREEDING STOCK - PUT BREED IN SECTION SELECTION

BOR: Border Leicester	CHE: Cheviot	COL: Columbian
COT: Cotswold	DOR: Dorset	DPR: Dorper
GRA: Grade	HAM: Hampshire	ROM: Romney
SFN: Spinners Flock/Natural	SFW: Spinners Flock/White	SHR: Shropshire
SOU: Southdown	SUF: Suffolk	TUN: Tunis

1. Due to limited barn space, there is a limit of two entries per class, per member.
2. 4-H members may enter sheep entries in the Spinner's Flock Classes *or* the Breed classes— *not both*
3. No parent may communicate with the judge during the show, nor may they enter the show ring unless requested.

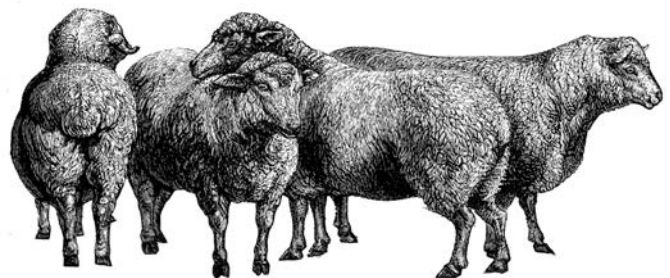
Classes with description:

	2. Junior Ram Lambs <i>born after December 31</i>	3. Senior Ram Lambs <i>born September 1—December 31</i>
4. Yearling Ram		7. Junior Ewe Lambs <i>born after December 31</i>
8. Senior Ewe Lambs <i>born September 1—December 31</i>	9. Yearling Ewe	10. Aged Ewe

SECTION OBC – OVERALL BREED COMPETITION

Classes with description:

1. Ewe with her lamb at side (lamb under 1 year) ewe must be owned by the exhibitor at the time of breeding. Both animals may be shown in separate classes. The assistant in the ring must be appropriately dressed and a 4-H Member. This class is limited to one entry per member.
2. Lamb Pair class— Two animals either sex, mix or match; same owner—*limit one entry per member*
3. Yearling Pair—Two animals either sex, mix or match; same owner—*limit one entry per member*
4. Costume Contest—please list description for costume to be worn by sheep on the 4-H member entry form.
5. Costume Parade—Cloverbud 4-H Members



4-H SHEEP & MARKET LAMB PROJECT (*continued*)

SECTION SHO – SHOWMANSHIP & FITTING

1. Senior—grades: 8-12	2. Junior—grades: 6-7
3. Young Shepherd—grades:4-5	4. Cloverbud—grades: 1-3

AWARDS

Trophies for top animals in each breed

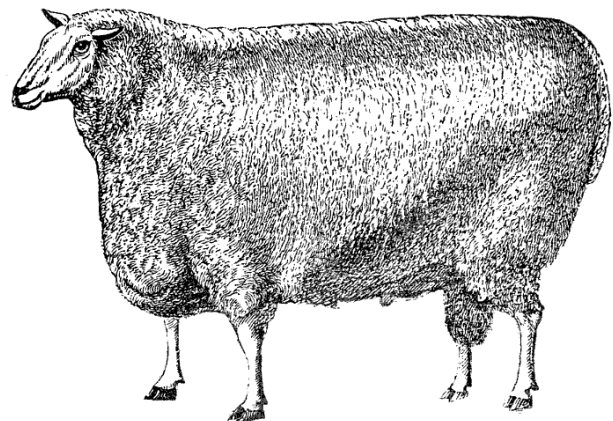
Trophies and Rosettes for overall Grand Champion Ewe and Ram will be awarded

- Reserve Champion Ewe and Ram will receive rosette only
- Senior Showmanship & Fitting
- Junior Showmanship & Fitting
- Novice Showmanship
- Young Shepherd Award
- Cloverbud Showmanship—*participation only*

Show rules are reviewed annually and may be subject to change

All exhibitors must abide by the Health Requirements in the Livestock Exhibitor and General Health Information section of the New Jersey State Fair®/Sussex County Farm and Horse Show website, <http://www.njstatefair.org/>. Water at the Fairgrounds may contain chlorine to combat harmful bacteria.

If barn space is available, all 4-H animals must remain from their show date until the end of the fair or forfeit the premiums paid by the New Jersey State Fair ®/Sussex County Farm and Horse Show.



4-H DAIRY GOAT PROJECT

Department Chairperson: Alice Sensale (973) 459-9213

The following policy to govern 4-H member participation in the Sussex County 4-H goat project shows at the NJSF®/SCFHS.

SECTION A: Registration and Entry Form Requirements

1. Each 4-H member is responsible for obtaining an NJSF®/SCFHS 4-H livestock entry form as soon as they are available from the 4-H office or from the club leader.
2. Completed 4-H member entry forms must be reviewed and signed by the club leader.
3. Each project animal must be recorded in the 4-H member's record book. The record book must be completed through the month of May, reviewed and signed by the club leader in June and delivered to the 4-H Office with the 4-H member entry form by July 1st by the club leader or by an adult designated by the club leader.
4. Entry forms that are turned in after *July 1st* will be identified as *received late*. 4-H animal projects that are entered late will forfeit all Danish placings and cash premiums awarded.
5. 4-H members will only be paid premiums for the top *ten* placings in this department.

SECTION B: Animal Health Requirements

1. A Certificate of Veterinary Inspection (CVI) is required for each 4-H goat project entered. The CVI must be shown to a club leader, fair livestock supervisor or veterinarian when the animal is unloaded at the fair. A CVI must be kept in the barn while the animal is at the fair.
2. In addition to the CVI requirements, if a 4-H club leader becomes aware of health conditions that could affect a 4-H member's animal's participation in the show; they should inform the fair livestock supervisor and/or veterinarian at the fair. During the 4-H project year if the 4-H club leader becomes aware of health conditions that could prevent an animal's participation in the show, the 4-H club leader should provide guidance and/or educational activities that will help the 4-H member correct these health conditions.
3. When the health of a 4-H member's project animal is in question a veterinarian will examine the animal and determine if the project animal should be removed from the fairgrounds.
4. No horned animals will be allowed in a 4-H show, barn and/or exhibit.
5. All goats must be a minimum of two months of age to enter the fairgrounds.
6. All exhibitors must abide by the Health Requirements in the Livestock Exhibitor & General Health Information section of the The New Jersey State Fair®/Sussex County Farm & Horse Show website, <http://njstatefair.org/>.

SECTION C: 4-H Member Requirements

1. 4-H members must have completed the 4th grade and have met all members in good standing requirements to be eligible to show and receive premiums. All members must participate in their project showmanship class to receive premiums.
2. A 4-H Cloverbud member can participate only in breeding and showmanship classes if the project leadership offers such a class. Cloverbud members must have completed the 1st—3rd grade. No cash premiums are awarded, only participation ribbons and trophies.

DAIRY GOAT PROJECT (Continued)

3. Please note that the purpose of the 4-H Cloverbud program is to introduce Cloverbud members to a variety of 4-H projects, which are available to them upon reaching 4th grade. Participation in the 4-H Cloverbud program is not an opportunity to gain experience that can be credited towards a 4-H'ers participation in the standard 4-H program upon reaching the 4th grade.
4. All members must have given a club 4-H public presentation to be eligible to show and/or receive premiums.
5. A person must have joined the project club before January 1st of current year in order to show.
6. Members, who miss the January 1st deadline may show in the 4-H breeding show as a learning experience, and receive ribbons, but will not be awarded cash premiums.
7. All club members intending to sell a market kid, must refer to Department 36- Market Kid Project.
8. Exhibitors shall be neatly dressed when exhibiting and wear clean jeans a white collared shirt, (no t-shirts), (no farm names on clothing) and wear sturdy, safe shoes. (no open-toed shoes)

SECTION D: 4-H Dairy Goat Project Requirements

1. 4-H dairy goat projects must have been owned and present at the home of the 4-H member or the immediate family by May 1st. An exception to this would be goats falling under the loaner agreement attested to by both parties of the agreement. A loaner agreement must be on file at the 4-H office by May 1st.
2. The 4-H member will fit all of his or her own project animals. First year members may receive assistance from other 4-H'ers and club leaders. No 4-H'er may do the work of fitting a goat for another 4-H'er. Parents are expected to support and enforce this rule as well. If a 4-H'er is in need of assistance, he or she may request the help of another 4-H'er or leader, subject to approval by their club leader.
3. The base date for computing the animal's age is the day of the show.
4. This show is not sanctioned by ADGA and will be run according to the Sussex County 4-H goat project leadership guidelines for the following breeds: All other purebreds, All other dwarf dairy breeds, Alpine, Toggenburg, Nubian, Nigerian Dwarf, Oberhasli, LaMancha, Saanen, and recorded grades.
5. No horned animals will be allowed in a 4-H show, barn and/or exhibit.
6. The original registration certificate is required for all animals six months of age or older, and must be shown to the show secretary before the start of judging. For animals under 6 months, the original registration certificate or a duplicate application stamped by ADGA will be accepted. No copies of the registration certificate or stamped applications, telegrams, or phone calls will be accepted as proof of ownership.
7. Any doe that has ever freshened or is in milk shall compete in the Senior Department. Any doe 24 months or under, that has never freshened, shall compete in the Junior Department. Any Doe over 24 months that has never freshened shall not be shown, but can be used in a showmanship class.
8. There will be no pre-show milk out unless advised by the show judge; however, animals with overly distended udders could be discriminated against.

DAIRY GOAT PROJECT (Continued)

SECTION SHO- Showmanship

Classes with description:

1. Cloverbud: 1 st —3 rd grades	2. Junior: 4 th —8 th grades	3. Senior: 9 th —13 th grades
---	--	---

These sections have the following classes:

ALP: Alpine	AOD: All other dwarf dairy breeds	AOP: All other purebreeds
DWA: Nigerian Dwarf	LAM: Lamancha	NUB: Nubian
OBE: Oberhasli	REG: Recorded grade	SAA: Saanen
TOG: Toggenburg	URG: Unrecorded grades	

Classes with description:

1. 2—4 months	2. 4—8 months	3. 8—12 months	4. 12—24 months
5. Milkers under 2 years old	6. Milkers 2—3 years old	7. Milkers 3—5 years old	8. Milkers 5 years and over

SECTION OBD – OVERALL BREED COMPETITION

Classes with description:

1. Dam & Daughter	2. Get of Sire: 3 offspring from same buck
3. Best Udder	4. Best Doe in Show

All exhibitors must abide by the Health Requirements in the Livestock Exhibitor and General Health Information section of the New Jersey State Fair®/Sussex County Farm and Horse Show website, <http://www.njstatefair.org/> Water at the Fairgrounds may contain chlorine to combat harmful bacteria.

If barn space is available, all 4-H animals must remain from their show date until the end of the fair or forfeit the premiums paid by the New Jersey State Fair®/Sussex County Farm and Horse Show.

Department 34

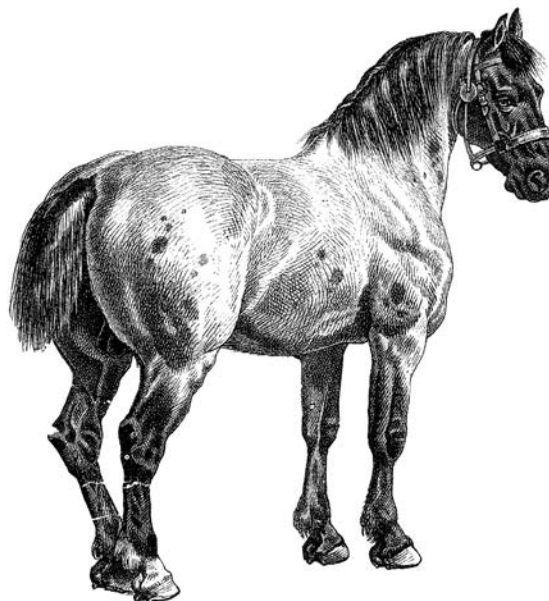
4-H HORSEMANSHIP PROJECT

Department Chairperson: Lori Wunderlich (973) 670-9290

Rules

1. 4-H Classes are open to any 4-H Horse Club member registered by January 1st and meets NJ 4-H Member in Good Standing requirements. Premiums will be paid only to Sussex County 4-H Horse Club Members. Cloverbud club members are only eligible for class numbers 1, 4,7,17,20 and 23 and are not eligible for premiums.
2. A Beginner class will be offered to Cloverbud or first year members who have not cantered at any other show
3. Completed 4-H member entry forms must be reviewed and signed by the club leader.
4. Each project animal must be recorded in the 4-H member's record book. The record book must be up-to-date through the month of May, reviewed and signed by the club leader in June and delivered to the 4-H office with the 4-H member entry form by July 1st by the club leader or by an adult designated by the club leader.
5. An entry fee of \$10 for the day is to be paid when you pick up your number.
6. Sussex County 4-H Horse Club members must have an up to date project book in order to be eligible for premiums. Premiums are as follows: 1st-\$20, 2nd-\$18, 3rd-\$16, 4th-\$14, 5th-\$12, 6th-\$10, 7th-\$8 and 8th-\$6.
7. Classes will be conducted in accordance with the current NJ State 4-H Horse Show Rulebook (<http://nj4h.rutgers.edu/horses/horseshow/>).
8. 4-H members who have completed 4th grade may participate in the Sussex County 4-H Horse Show but not in the State 4-H Horse Show or Sussex County 4-H Qualifying Shows.
9. A 4-H Horse Registration form must be completed and submitted to the 4-H Office prior to April 1st. This form is available in the 4-H Horse Project Record Book—*page 33*.
10. If the 4-H member is using a leased/borrowed horse, a 4-H horse project lease/borrow form must be completed and submitted to the 4-H office prior to April 1st along with the horses registration form. The lease/borrow form is located in the 4-H Horse Project Record book *page—34*.
11. All members must participate in a showmanship class.
12. A 4-H member *must* give a county-level presentation in order to show in the 4-H Show at the Fair.
13. All exhibitors must abide by the Health Requirements in the Livestock Exhibitor & General Health Information section of the The New Jersey State Fair®/Sussex County Farm & Horse Show website, www.njstatefair.org.

Section and Class Numbers with Descriptions are on the following page.



4-H HORSEMANSHIP PROJECT (Continued)

SECTION HOR—HORSE

Class Number with description

1. Cloverbud/Beginner Showmanship	<i>Age may vary; based on experience</i>
2. Senior Western Showmanship	<i>Grades 9-13</i>
3. Junior Western Showmanship	<i>Grades 4-8</i>
4. Cloverbud/Beginner Western Horsemanship	<i>Age may vary; based on experience</i>
5. Senior Western Horsemanship	<i>Grades 9-13</i>
6. Junior Western Horsemanship	<i>Grades 4-8</i>
7. Beginner/Cloverbud Walk/Jog Western Pleasure	<i>Age may vary; based on experience</i>
8. Senior Western Pleasure	<i>Grades 9-13</i>
9. Junior Western Pleasure	<i>Grades 4-8</i>
10. Egg and Spoon	
11. Command	
12. Bareback Equitation	
13. English Dressage (1 class)	<i>Test of Choice</i>
14. Western Dressage (1 class)	<i>Test of Choice</i>
15. Sr. English Showmanship	<i>Grades 9-13</i>
16. Junior English Showmanship	<i>Grades 4-8</i>
17. Beginner/Cloverbud Walk/Trot English Equitation	<i>Age may vary; based on experience</i>
18. Senior English Equitation	<i>Grades 9-13</i>
19. Junior English Equitation	<i>Grades 4-8</i>
20. Cloverbud/Beginner Walk/Trot English Pleasure	<i>Age may vary; based on experience</i>
21. Senior English Pleasure	<i>Grades 9-13</i>
22. Junior English Pleasure	<i>Grades 4-8</i>
23. Walk/Trot Crossrails	<i>Maximum fence height: 2 ft., 6 in.</i>
24. Hunter Hack	<i>Maximum fence height: 2 ft., 6 in.</i>
25. Working Hunter	<i>Maximum fence height: 2 ft., 6 in.</i>
26. Hunter Seat Equitation Over Fences	<i>Maximum fence height: 2 ft., 6 in.</i>

All exhibitors must abide by the Health Requirements in the Livestock Exhibitor and General Health Information section of the New Jersey State Fair®/Sussex County Farm and Horse Show website, <http://www.njstatefair.org/> Water at the Fairgrounds may contain chlorine to combat harmful bacteria.

4-H SWINE PROJECT

Department Chairperson: Allison Simeone (973)702-1080

The following policy to govern 4-H member participation in the Sussex County 4-H swine project shows at the NJSF®/SCFHS.

SECTION A: Registration and Entry Form Requirements

1. Each 4-H member is responsible for obtaining an NJSF®/SCFHS 4-H livestock entry form as soon as they are available from the 4-H office or from the club leader.
1. Completed 4-H member entry forms must be reviewed and signed by the club leader.
1. Each project animal must be recorded in the 4-H member's record book. The record book must be completed through the month of May, reviewed and signed by the club leader in June and delivered to the 4-H Office with the 4-H member entry form by July 1st by the club leader or by an adult designated by the club leader.
1. 4-H member entry forms turned in after July 1st will be identified as received late. 4-H animal projects that are entered late will forfeit all premiums, placings and the right to sell their animal at the Market Animal Sale.

SECTION B: Animal Health Requirements

1. A Certificate of Veterinary Inspection (CVI) is required for each 4-H swine project entered. The CVI must be shown to a club leader, fair livestock supervisor or veterinarian when the animal is unloaded at the fair. A CVI must be kept in the barn while the animal is at the fair.
2. In addition to the CVI requirements, if a 4-H club leader becomes aware of health conditions that could affect a 4-H member's animal's participation in the show; they should inform the fair livestock supervisor and/or veterinarian at the fair. During the 4-H project year if the 4-H club leader becomes aware of health conditions that could prevent an animal's participation in the show, the 4-H club leader should provide guidance and/or educational activities that will help the 4-H member correct these health conditions.
3. When the health of a 4-H member's project animal is in question a veterinarian will examine the animal and determine if the project animal should be removed from the fairgrounds.
4. All exhibitors must abide by the Health Requirements in the Livestock Exhibitor & General Health Information section of the The New Jersey State Fair®/Sussex County Farm & Horse Show website, <http://www.njstatefair.org/>.

SECTION C: 4-H Member Requirements

1. 4-H members must have completed the 4th grade and have met all members in good standing requirements to be eligible to show and receive premiums. All members must participate in their project showmanship class to receive premiums or sell a market animal in the 4-H Market Animal Sale.
2. A 4-H Cloverbud member can participate only in breeding and showmanship classes if the project leadership offers such a class. Cloverbud members must have completed the 1st—3rd grade. No cash premiums are awarded, only participation ribbons and trophies.
3. Please note that the purpose of the 4-H Cloverbud program is to introduce Cloverbud members to a variety of 4-H projects, which are available to them upon reaching 4th grade. Participation in the 4-H Cloverbud program is not an opportunity to gain experience that can be credited towards a 4-H'ers participation in the regular 4-H program upon reaching the 4th grade.
4. All 4-H members who intend to sell a market hog in the 4-H Market Animal Sale must have given a county-level 4-H public presentation during the project year.

4-H SWINE PROJECT (*Continued*)

4. A person must have joined the project club before January 1st of current year in order to show. Members who miss the January 1st deadline may show in the 4-H breeding show as a learning experience and receive ribbons, but will not be awarded cash premiums and will be unable to sell a market animal at the 4-H Market Animal Sale.
5. All club members are required to raise and show at least one breeding swine project in order to sell a market hog.
6. The dress code for showing is clean jeans; a white collared shirt (no t-shirts); socks, and sturdy, safe shoes (no open-toed shoes).

SECTION D: 4-H Breeding Project Requirements

1. 4-H swine projects must have been owned and present at the home of the 4-H member or the immediate family by May 1st. An exception to this would be swine falling under the loaner agreement attested to by both parties of the agreement. A loaner agreement must be on file at the 4-H office by May 1st
2. The right to cancel classes or change classes is reserved by the chairperson.
3. Exhibitors will be expected to provide their own feeding utensils & equipment, and be responsible for feeding and watering their own animals.
4. Exhibitors will be expected to display or parade their animals as directed and to accept conditions as provided without controversy. Animals must be kept in show shape
5. Animals must be on the grounds no later than NOON the first Saturday of the fair and remain on the grounds until Wednesday.

SECTION E: Market Hog Project Requirements

1. Market hogs must be born February 1st or later of the current year.
2. Market hogs must be owned and present at the home of the member by May 1st of current year.
3. Market projects must weigh between 200 lbs and 275 lbs when weighed in at the fair in order to qualify for the Market Animal Sale.
4. A market hog must be judged a blue ribbon (Excellent) to qualify for the sale.
5. First & Second place animals from each weight class will make up the championship class. An individual 4-H member may show more than one animal in the championship class.
6. The champion & reserve champion animals in the market show must be sold. All other animals that receive a *blue* ribbon and qualify for the sale may be sold at the 4-H's discretion. Only one 4-H market hog project may be sold in the Market Animal Sale, although a member can raise and show more than one project animal. ***The only exception to this is when the member is awarded both grand and reserve champions.***
7. Market animals must be ready to be weighed in by 8:00 am and will be weighed no later than 10:00 am on Monday of the fair at times to be announced by the division chairpersons. Failure to do so will forfeit the right to show.

4-H SWINE PROJECT (*Continued*)

SECTION MAR: Market

CLASSES with description

Market Hogs -

Classes to be determined after weigh-ins

—all entries enter into Class A

SECTION GIL: Gilt

CLASSES with description

1. Gilts—January
2. Gilts—February A: (born 1st – 14th)
3. Gilts—February B : (born 15th – 18th)
4. Gilts—February C: (born 19th-28th)
5. Gilts—March
6. Gilts—April

SECTION PAR: Pairs

CLASSES with description

1. Two gilts
2. Two barrows
3. One gilt, one barrow

SECTION SHO: Showmanship

CLASSES with description

1. Cloverbud: 1st – 3rd grades
2. Junior: 4th – 8th grades
3. Senior: 9th – 13th grades

AWARDS:

Grand & Reserve Champion Market Hog	Grand & Reserve Champion Gilt
Grand & Reserve Champion Pairs	Grand & Reserve Junior Showman
Grand & Reserve Champion Senior Showman	

All exhibitors must abide by the Health Requirements in the Livestock Exhibitor and General Health Information section of the New Jersey State Fair®/Sussex County Farm and Horse Show website, <http://www.njstatefair.org/> Water at the Fairgrounds may contain chlorine to combat harmful bacteria.

If barn space is available, all 4-H animals must remain from their show date until the end of the Fair or forfeit the premiums paid by the New Jersey State Fair®/Sussex County Farm And Horse Show.

4-H MEAT GOAT & MARKET KID PROJECT

Department chairperson: Alice Sensale (973) 459-9213

The following policy to govern 4-H member participation in the Sussex County 4-H goat project shows at the NJSF®/SCFHS.

SECTION A: Registration and Entry Form Requirements

1. Each 4-H member is responsible for obtaining an NJSF®/SCFHS 4-H livestock entry form as soon as they are available from the 4-H office or from the club leader.
2. Completed 4-H member entry forms must be reviewed and signed by the club leader.
3. Each project animal must be recorded in the 4-H member's record book. The record book must be completed through the month of May, reviewed and signed by the club leader in June and delivered to the 4-H Office with the 4-H member entry form by July 1st by the club leader or by an adult designated by the club leader.
4. 4-H member entry forms that are turned in after July 1st will be identified as *received late*. 4-H animal projects that are entered late will forfeit all premiums, placings and the right to sell their animal at the Market Animal Sale.

SECTION B: Animal Health Requirements

1. A Certificate of Veterinary Inspection (CVI) is required for each 4-H goat project entered. The CVI must be shown to a club leader, fair livestock supervisor or veterinarian when the animal is unloaded at the fair. A CVI must be kept in the barn while the animal is at the fair.
2. In addition to the CVI requirements, if a 4-H club leader becomes aware of health conditions that could affect a 4-H member's animal's participation in the show; they should inform the fair livestock supervisor and/or veterinarian at the fair. During the 4-H project year if the 4-H club leader becomes aware of health conditions that could prevent an animal's participation in the show, the 4-H club leader should provide guidance and/or educational activities that will help the 4-H member correct these health conditions.
3. When the health of a 4-H member's project animal is in question a veterinarian will examine the animal and determine if the project animal should be removed from the fairgrounds.
4. No horned animals will be allowed in a 4-H show, barn and/or exhibit.
5. All goats must be a minimum of two months of age to enter the fairgrounds.
6. All exhibitors must abide by the Health Requirements in the Livestock Exhibitor & General Health Information section of the The New Jersey State Fair®/Sussex County Farm & Horse Show website, <http://www.njstatefair.org/>

SECTION C: 4-H Member Requirements

1. 4-H members must have completed the 4th grade and have met all members in good standing requirements to be eligible to show and receive premiums. All members must participate in their project showmanship class to receive premiums or sell a market animal in the 4-H Market Animal Sale.
 - a. A 4-H Cloverbud member can participate in breeding, wether and showmanship classes if the project leadership offers such a class. Cloverbud members must have completed the 1st – 3rd grade. No cash premiums are awarded, only participation ribbons and trophies.
 - b. Please note that the purpose of the 4-H Cloverbud program is to introduce Cloverbud members to a variety of 4-H projects, which are available to them upon reaching 4th grade. Participation in the 4-H Cloverbud program is not an opportunity to gain experience that can be credited towards a 4-H'ers participation in the standard 4-H program upon reaching the 4th grade.

4-H MEAT GOAT & Market Kid Project (Continued)

2. All 4-H members who intend to sell a market kid in the 4-H Market Animal Sale must have given a county-level 4-H Public presentation.
3. A member must have joined the project club before January 1st of current year in order to show. Members, who miss the January 1st deadline, may show in the 4-H breeding show as a *learning experience* and receive ribbons, but *will not* be awarded cash premiums and will be unable to sell a market animal at the 4-H Market Animal Sale.
4. All club members are required to raise and show at least one breeding goat project in order to sell a market kid.
5. The dress code for showing is clean jeans; a white collared shirt (no T-shirts); socks, and sturdy, safe shoes (no open toed shoes).
6. All members wishing to sell a market goat must have been enrolled as a 4-H member for a full program year prior to selling a market goat project.

SECTION D: 4-H Meat Breed Goat Project Requirements

1. 4-H meat goat projects must have been owned and present at the home of the 4-H member or the immediate family by May 1st. An exception to this would be goats falling under the loaner agreement attested to by both parties of the agreement. A loaner agreement must be on file at the 4-H office by May 1st.
2. The 4-H member will fit all of his or her own project animals. First year members may receive assistance from other 4-H'ers and club leaders. No 4-H'er may do the work of fitting a goat for another 4-H'er. Parents are expected to support and enforce this rule as well. If a 4-H'er is in need of assistance, he or she may request the help of another 4-H'er or leader, subject to approval by their club leader.
3. Meat breeds will be washed and clipped 4-6 weeks before the day of the show. Using an Oster 4f blade or an equivalent. The ideal length of finished hair is 3/8" and should not exceed 1". Inside of ears will be trimmed with a #40 blade. Hooves will be clean and trimmed neatly.
4. Pygmy goats will be washed. Clipping of ears and trimming of hooves and long hairs should follow the guidelines in the Pygmy Goat manual.
5. The base date for computing the animal's age is the day of the show.
6. This show is not sanctioned by ABGA and will run according to the Sussex County 4-H Goat Project leadership guidelines for the following breeds: Pygmy, Boers and other meat breeds.
7. No horned animals will be allowed in a 4-H show, barn and/or exhibit.
8. Any doe that has ever freshened or is in milk shall compete in the Senior Department. Any doe 24 months or under, that has never freshened, shall compete in the Junior Department. Any doe over 24 months that has never freshened can not be shown but can be used in showmanship. It is required that a meat breed doe in milk should not be shown with a full udder.
9. Meat goat breeds will not be disqualified for having extra teats.
10. First & Second place animals from each age class will make up the championship class.
11. Meat goat breeds must be shown by their owner, unless the owner is showing more than one animal.
12. Those additional animals must be shown by a 4-H goat project member in good standing.

4-H GOAT & MARKET KID PROJECT (Continued)

SECTION E: Market Kid Project Requirements

1. Market goats must be born January 1st or later of the current year.
2. Market goats must be owned and present at the home of the 4-H member or the immediate family by May 1st.
3. Market projects must weigh between 50 lbs and 110 lbs when weighed in at the fair in order to qualify for the Market Animal Sale. If the animal does not make weight it can be shown in the meat breed wether class. There will be two classes, a lightweight and a heavyweight class if there are enough animals to make up such classes.
4. Market projects must be shown by their owner, unless the owner is showing more than one animal. Those additional animals must be shown by a 4-H goat project member in good standing.
5. A market goat must be judged a blue ribbon (excellent) and meet all accepted market animal health requirements to qualify for the sale.
6. First & Second place animals from each weight class will make up the championship class. An individual 4-H member may show more than one animal in the championship class.
7. The Champion & Reserve Champion animals in the goat market show must be sold. All other animals that receive a *blue* ribbon and qualify for the sale may be sold at the 4-Her's discretion. Only one 4-H market goat project can be sold in the Market Animal Sale, although a member can raise and show more than one project animal.
The only exception to this is when the member is awarded both Grand and Reserve Champions.
8. All bucks must be castrated. All market kids must be disbudded.
9. Market kids are to be fitted following the rules in Section D: 2, 3 or 4 as applicable.
10. Market animals must be ready to be weighed in by 8:00 am and will be weighed no later than 10:00 am on Monday of the fair at times to be announced by the division chairpersons. Failure to do so will forfeit the right to show.
11. Members must raise a breeding project animal in order to sell a market goat.

SECTION SHO- Showmanship

Classes with description:

Cloverbud: 1 st – 3 rd grades	Junior: 4 th – 8 th grades	Senior: 9 th – 13 th grades
---	--	---

SECTION MAR - MARKET

Class designations will be adjusted into two weight categories at the club leader's discretion depending on the number of animals at weigh-in.

Market kid (must weigh between 50 and 110 pounds)—*all entires into Class A*

These sections have the following classes:

MEB: MEAT BREEDS (i.e. Boers); and **PYG:** PYGMY

Classes with description:

Junior Does		
2. 2-3 months	3. 3-6 months	4. 6-9 months
5. 9-12 months	6. 12 –18 months	7. 18 –24 months

4-H GOAT & MARKET KID PROJECT (Continued)

Senior Does (those that have freshened)		
9. Yearling does under 24 months	10. 24 – 36 months	11. 36 months and older

SECTION WET - Wether

Classes with description:

1. Lightweight 2-4 months	2. Heavyweight 4-8 months
---------------------------	---------------------------

SECTION OBM – OVERALL BREED COMPETITION

Classes with description:

1. Dam & Offspring; one doe and one offspring*	
2. Get of Sire; 3 offspring* from same buck	3. Best Doe in Show
* Offspring can be a wether or a doe	

All exhibitors must abide by the Health Requirements in the Livestock Exhibitor and General Health Information section of the New Jersey State Fair®/Sussex County Farm and Horse Show website, <http://www.njstatefair.org/> Water at the Fairgrounds may contain chlorine to combat harmful bacteria.

If barn space is available, all 4-H animals must remain from their show date until the end of the fair or forfeit the premiums paid by the New Jersey State Fair®/Sussex County Farm and Horse Show.

DEPARTMENT 37

4-H ALPACA PROJECTS

Department Chairperson: Natalie Burger, (973) 948-6800

SECTION A: Registration and Entry Form Requirements

1. Each 4-H member is responsible for obtaining an NJSF/SCF&HS 4-H livestock entry form as soon as they are available from the 4-H Office, online, or from the club leader.
2. Completed 4-H member entry forms must be reviewed and signed by the club leader and returned to the 4-H office by July 1st.
3. The 4-H member's record book must be completed through the month of May, reviewed and signed by the club leader in June and delivered to the 4-H Office with the 4-H member entry form by July 1st by the club leader or by an adult designated by the club leader.
4. Entry forms will not be accepted after July 1st and the 4-H member will not be allowed to participate in the show if the form or record book is received late.

SECTION B: Animal Health Requirements

1. A Certificate of Veterinary Inspection (CVI) is required for each 4-H alpaca attending the fair, including companion alpacas. The CVI must be shown to a club leader, fair livestock supervisor or veterinarian when the alpaca(s) is/are unloaded at the fair. The CVI must be kept in the barn while the alpaca(s) is/are at the fair.
2. In addition to the CVI requirements, if a 4-H club leader becomes aware of health conditions that could affect a 4-H member's alpaca's participation in the show; they will inform the fair livestock supervisor and/or veterinarian at the Fair.
3. When the health of a 4-H member's project alpaca is in question a veterinarian will examine the alpaca and determine if the project alpaca should be removed from the fairgrounds.
4. Every alpaca must also have proof of a negative BVD-PCR, anytime in the lifetime of the alpaca and proof of a current rabies vaccine, within the last 12 months. Both must be properly stated on the CVI.
5. All exhibitors must abide by the Health Requirements in the Livestock Exhibitor & General Health Information section of the The New Jersey State Fair®/Sussex County Farm & Horse Show website, <http://www.njstatefair.org/>.

SECTION C: 4-H Member Requirements

1. All exhibitors must be active 4-H members from a 4-H alpaca club and must be members in good standing to be eligible to show. All members must be members of a Sussex county 4-H alpaca club to receive premiums.
2. Members must be registered members by January 1st, have attended at least two-thirds of the 4-H club meetings and have done a county level Public Presentation to be eligible to show.
3. Record books must be up to date as of the first meeting in June and submitted to the 4-H leader with the properly completed 4-H member entry form at the first meeting in June.
4. Exhibitors shall be neatly dressed when exhibiting and wear black pants or shorts, clean white shirts (names and logos prohibited, unless shirts are provided by a sponsor) and wear sturdy, safe shoes (no open-toed, open heel, or heeled shoes).

ALPACA PROJECTS (Continued)

SECTION D: 4-H Alpaca Requirements

1. All alpacas must be at least six months of age as of the show date to show.
2. Project alpacas may be owned by the exhibitor or exhibitor's family or leased from an alpaca farm with the lease agreement on file at the 4-H office by May 1st of current year. Project alpaca substitutions due to loss, illness, or injury will only be allowed at the discretion of the club leader.
3. Alpacas may be either breed type, huacaya or suri and be either male or female, breeder or non-breeder.
4. Alpacas must have been shorn using full body shearing the spring prior to the show to be shown at the fair.
5. Alpacas are to be shown in a proper fitting halter with a lead line in a non distracting color, black being the preferred color.
6. All exhibitors must have their project alpaca at the fairgrounds on the day designated for the alpacas to arrive and may not remove their alpaca until the closing of the fair if barn space is available.

SECTION ALP – Alpaca Classes

CLASSES with description:

1. Open Obstacle	2. Open Public Relations
3. Open Public Relations	4. Open Egg & Spoon
5. Open Gambler's Choice	

Classes of over ten entries will be split equally by age of entrant

Awards

1st thru 6th place ribbons will be awarded for each class with Champion and Reserve being awarded for highest combined scores in classes one thru three (five exhibitors need to be in each class for the champion and reserve to be awarded) Participation ribbons will be awarded to non placing entries.

All exhibitors must abide by the Health Requirements in the Livestock Exhibitor and General Health Information section of the New Jersey State Fair®/Sussex County Farm and Horse Show website, <http://www.njstatefair.org/> Water at the Fairgrounds may contain chlorine to combat harmful bacteria.

If barn space is available, all 4-H animals must remain from their show date until the end of the fair or forfeit the premiums paid by the New Jersey State Fair®/Sussex County Farm and Horse Show.